

Hollow-cone Nozzle Multiple type



► Features

- Interchangeable nozzle tips.
- Relatively small droplets.
- Wide-area spraying.

► Applications

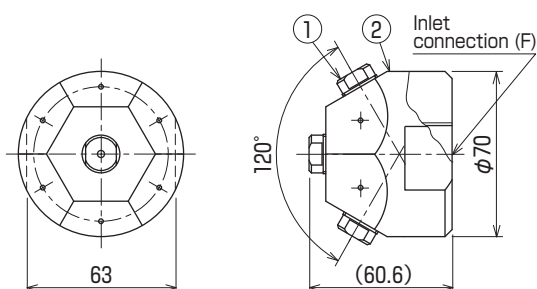
- Dust control used in cement, steel, and chemical industries.
- Cleaning, humidification, and cooling of gases.

► Materials

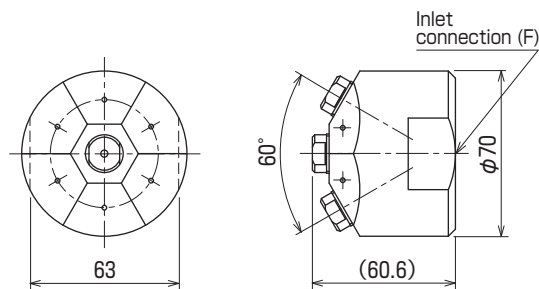
- 303 Stainless steel
 - Brass
- Other materials available upon request.

Shapes and dimensions

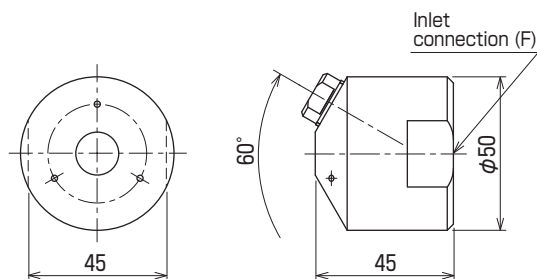
- KSC····-7, Taper spiral core type
[Seven-orifice type with 120°]



- [Seven-orifice type with 60°]



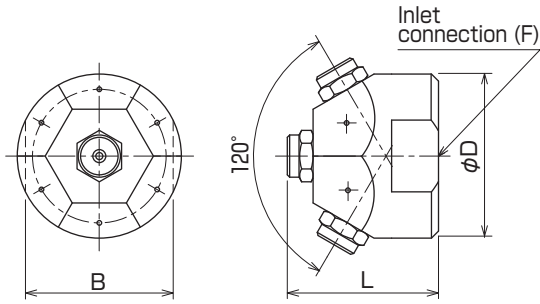
- KSC····-3, Taper spiral core type
[Three-orifice type with 60°]



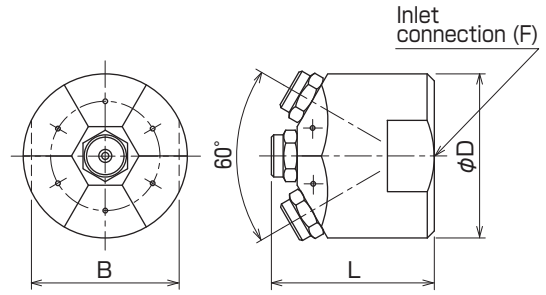
No.	Part name
1	Nozzle tip
2	Adapter

Model	Shape	Connecting thread	Weight [g]
KSC····-7	Seven-orifice type 120°	G ³ / ₄	1250
KSC····-7	Seven-orifice type 60°	G ³ / ₄	1320
KSC····-3	Three-orifice type 60°	G ³ / ₄	570

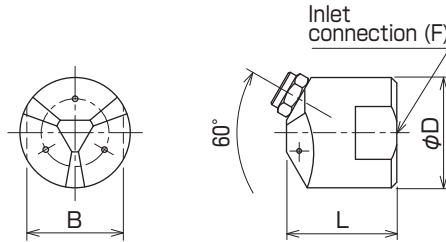
● KSFC····-7, Straight spiral core type
[Seven-orifice type with 120°]



[Seven-orifice type with 60°]



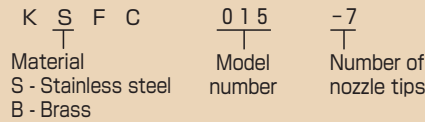
● KSFC····-3, Straight spiral core type
[Three-orifice type with 60°]



Model	Model number	Shape	Dimension [mm]			Connecting thread	Weight [g]
			D	L	B		
KSFC····-7	008 to 03	Seven-orifice type 120°	50	48	45	G ³ / ₄	530
KSFC····-7	008 to 03	Seven-orifice type 60°	50	53	45	G ³ / ₄	830
KSFC····-7	04 to 08	Seven-orifice type 120°	70	64.5	63	G ³ / ₄	1530
KSFC····-7	04 to 08	Seven-orifice type 60°	70	69.5	63	G ³ / ₄	1800
KSFC····-3	008 to 03	Three-orifice type 60°	40	40	35	G ³ / ₄	500
KSFC····-3	04 to 08	Three-orifice type 60°	50	45	45	G ³ / ₄	660

* Nozzle dimensions depend upon nozzle model number.

● Model and Model Number representing



● Standard type model number list

Model	Model number	Minimum orifice diameter [mm]	Flow rate [L/min] at following pressure [MPa]								Spray angle per orifice at pressure 0.5 MPa
			0.3	0.5	0.7	1.0	1.5	2.0	2.5	3.0	
KSC	005	0.6	0.50	0.65	0.76	0.91	1.12	1.29	1.44	1.58	60°
	008	0.7	0.80	1.03	1.22	1.46	1.79	2.1	2.3	2.5	
	01	0.9	1.00	1.29	1.53	1.83	2.2	2.6	2.9	3.2	
	015	1.0	1.50	1.91	2.3	2.7	3.3	3.8	4.3	4.7	
	018	1.2	1.80	2.3	2.8	3.3	4.0	4.7	5.2	5.7	
	02	1.3	2.0	2.6	3.1	3.7	4.5	5.2	5.9	6.4	
	025	1.4	2.5	3.3	3.9	4.6	5.6	6.5	7.3	8.0	
	03	1.5	3.0	3.9	4.6	5.5	6.7	7.8	8.7	9.5	
	035	1.5	3.5	4.5	5.4	6.4	7.8	9.1	10.1	11.1	
	04	1.6	4.0	5.2	6.1	7.3	8.9	10.3	11.5	12.6	
	045	1.6	4.5	5.8	6.9	8.2	10.0	11.6	13.0	14.2	
	05	1.7	5.0	6.4	7.6	9.1	11.2	12.9	14.4	15.8	
	06	1.8	6.0	7.8	9.2	11.0	13.5	15.6	17.4	19.0	
KSFC	008	0.6	0.80	1.03	1.22	1.46	1.79	2.1	2.3	2.5	60°
	01	0.7	1.00	1.29	1.53	1.83	2.2	2.6	2.9	3.2	
	015	0.9	1.50	1.91	2.3	2.7	3.3	3.8	4.3	4.7	
	02	1.1	2.0	2.6	3.1	3.7	4.5	5.2	5.9	6.4	
	03	1.3	3.0	3.9	4.6	5.5	6.7	7.8	8.7	9.5	
	04	1.5	4.0	5.2	6.1	7.3	8.9	10.3	11.5	12.6	
	06	1.6	6.0	7.8	9.2	11.0	13.5	15.6	17.4	19.0	
	08	1.8	8.0	10.3	12.2	14.6	17.9	20.7	23.1	25.3	

*Flow rates are calculated values using a water pressure of 0.3 MPa as a basis for calculation.

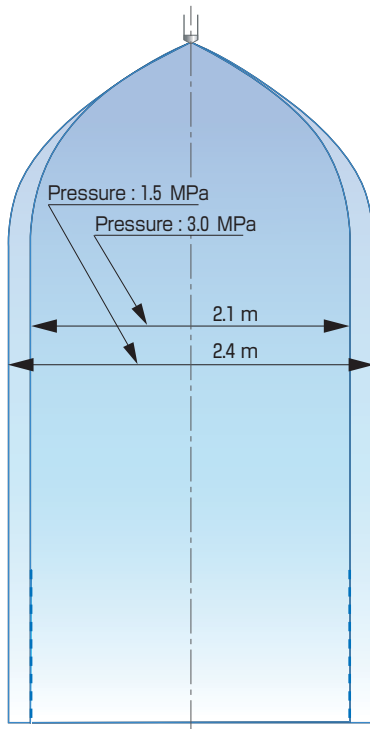
Flow rates of the three-orifice and seven-orifice types are three and seven times, respectively, higher than the indicated values.

● Performance data

Spray patterns

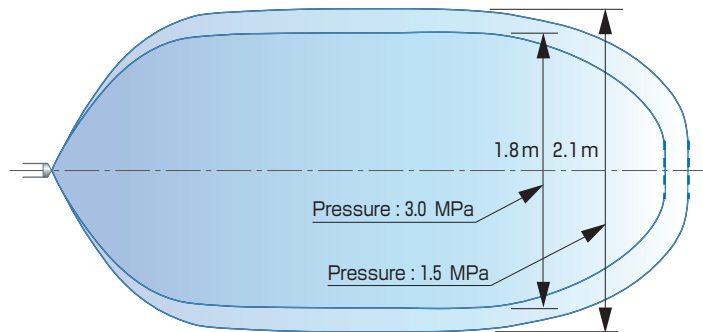
Nozzle model number KSC 008 - 7 (Seven-orifice type with 60°)

Downward spray



Horizontal spray

(Widthwise, view from the top)



(Thicknesswise, view from the side)

