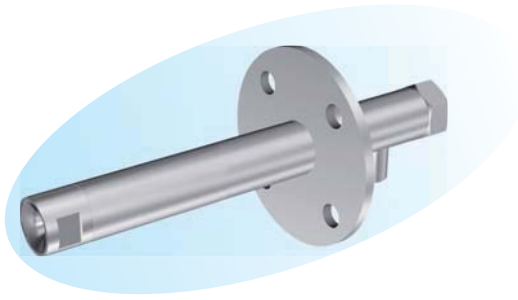


PAW Nozzle



► Features

- Relatively small droplet even when high flow rate.
- Large orifice diameter minimizes clogging.
- Wide-angle full-cone spray pattern.

► Applications

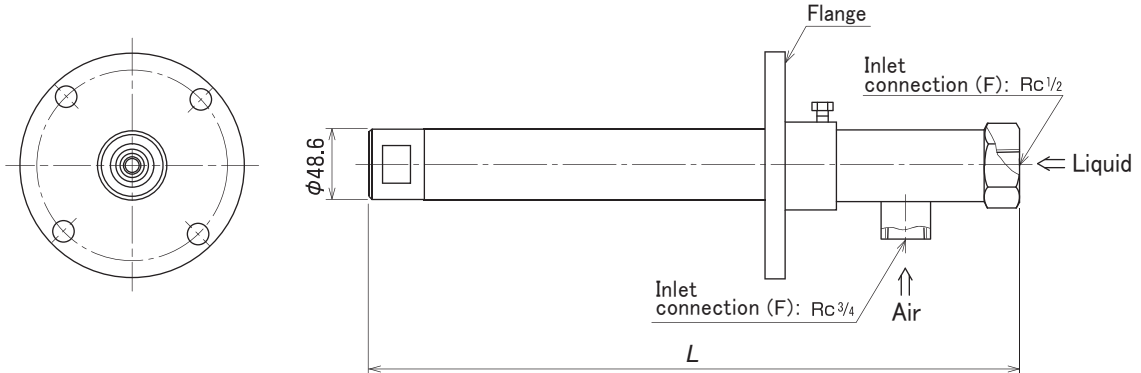
- Waste water atomizing in incinerator.
- Waste oil burning.
- Oil burner.
- Cooling of gases.

► Materials

- Principal parts: 316 Stainless steel

Shapes and dimensions

● PAW type



* NPT thread is also available.

* Dimension L and flange size are to be specified by the customer.

● Model and Model Number representing

PAW - $\frac{B}{\text{Model number}} - 47S$

● Standard type model number list

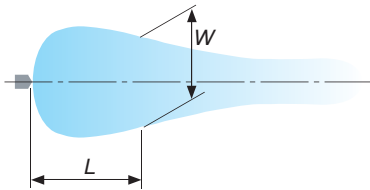
Model	Model number	Min. orifice diameter for liquid [mm]	Air pressure [MPa]	Air flow rate [m³/h(nor)]	Water flow rate [L/min] at following water pressure [MPa]				
					0.005	0.01	0.02	0.03	0.04
PAW	B-47S	6.0	0.2	29.2	2.1	3.0	5.4	8.0	9.8
			0.3	38.6	-	-	4.8	5.7	7.2
			0.4	47.7	-	-	4.9	6.0	5.7
	B-55S	6.0	0.2	53.3	-	-	7.8	10.0	12.1
			0.3	74.3	-	-	7.0	8.8	10.0
			0.4	93.2	-	-	5.1	7.7	9.2

■ Performance data

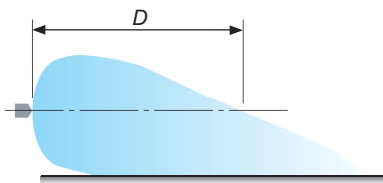
Spray patterns

Nozzle model number PAW - B - 47S

[Widthwise, view from the top]



[Thicknesswise, view from the side]



Air pressure [MPa]	Water pressure [MPa]	Spray pattern value			
		D	W at L		
			1000	2000	3000
0.2	0.02	2400	1400	1600	800
	0.03	2400	1400	1600	1000
	0.04	2800	1400	1800	1100
0.3	0.02	2800	1800	1200	800
	0.03	2800	1400	1200	800
	0.04	2800	1300	1100	800
0.4	0.02	3000	1600	1200	1000
	0.03	3000	1600	1400	1000
	0.04	3000	1400	1200	1000