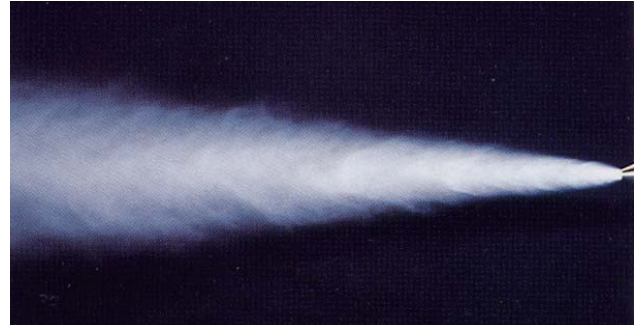
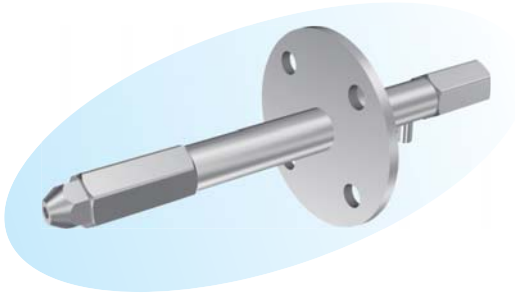


Single Mist Nozzle



► Features

- Easy to maintain.
- Large orifice diameter minimizes clogging.

► Applications

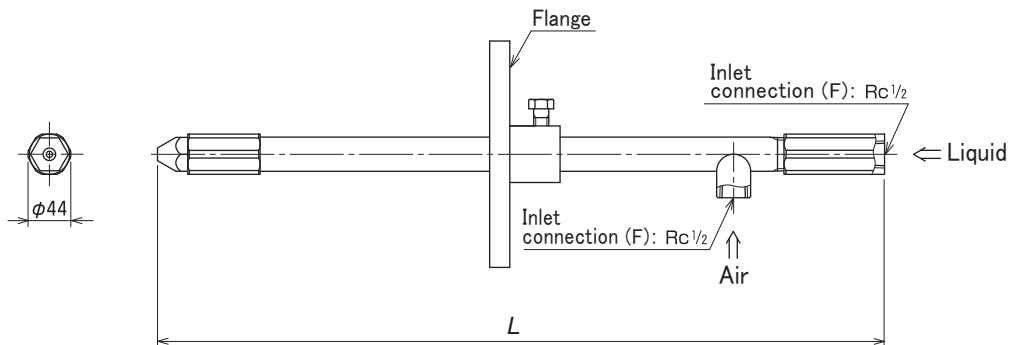
- Exhaust gas cooling in waste incineration plants and desuperheating tower.
- Atomizing of lime hydrate slurry.

► Materials

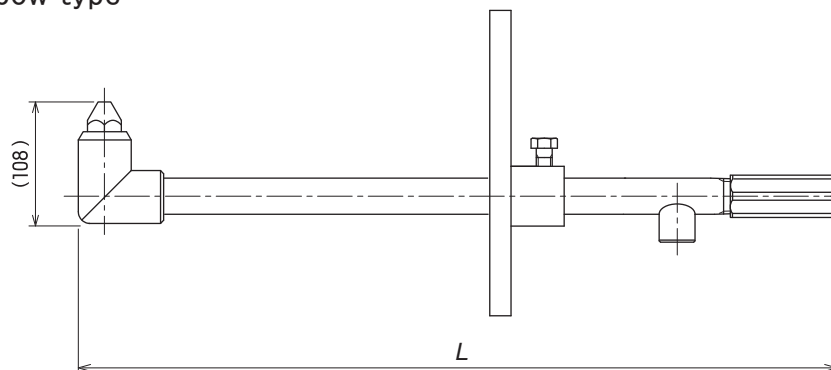
- Principal parts: 316L Stainless steel

Shapes and dimensions

● KAM, Straight type



● KAM, Elbow type



* NPT thread is also available.

* Dimension L and flange size are to be specified by the customer.

● Model and Model Number representing

KAM 700 S
Model number

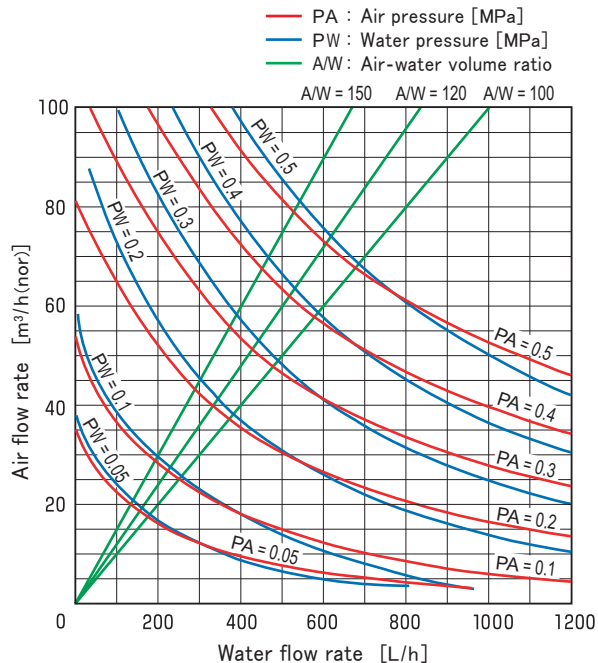
Standard type model number list

Model	Model number	Min. orifice diameter for liquid [mm]	Air-water volume ratio	Water flow rate [L/h] at following water pressure [MPa]			
				0.2	0.3	0.4	0.5
KAM	360 S	4.5	100	230	290	350	410
			150	180	230	280	320
			200	150	190	230	280
	600 S	7.5	100	370	480	580	680
			150	290	370	440	530
			200	240	300	370	430
	700 S	8.2	100	440	560	680	800
			150	350	440	540	620
			200	290	370	440	530
	850 S	8.7	100	540	700	850	1000
			150	420	550	670	780
			200	350	460	560	660
	1000 S	10.0	100	660	770	990	1160
			150	530	650	780	900
			200	440	540	650	770
	1150 S	11.4	100	740	940	1150	1370
			150	580	740	890	1080
			200	480	600	740	890

Performance data

Characteristic curves

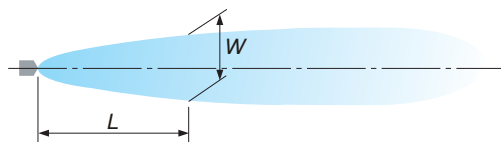
Nozzle model number KAM 600 S



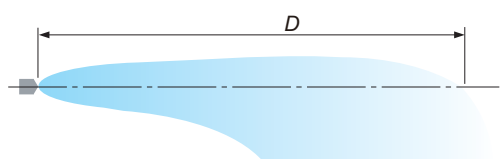
Spray patterns

Nozzle model number KAM 700 S

[Widthwise, view from the top]



[Thicknesswise, view from the side]



Air flow rate [m ³ /h(nor)]	Water flow rate [L/h]	Air-water volume ratio	Spray pattern value [mm]		
			D	L	W
50	500	100	8000	500	200
				1000	300
				2000	600
				3000	800