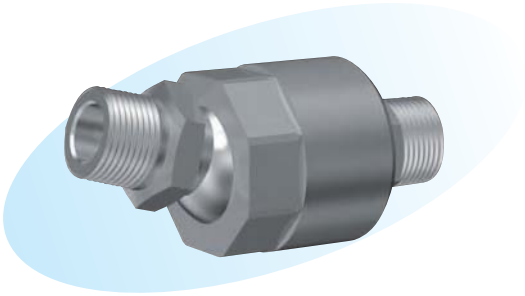


# Swivel Type Pipe Joints



## Features

- The operator can change the joint position as needed without loosening the cap, as the joint is fastened by a fixed spring.

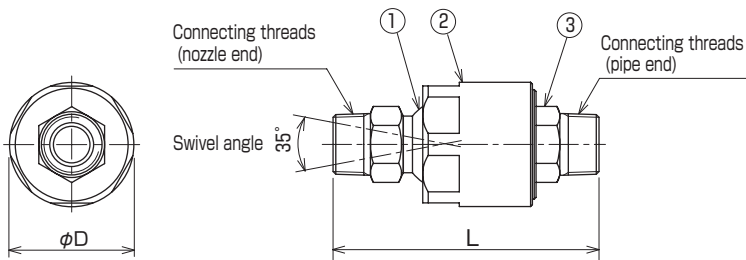
## Materials

- Stainless steel (standard material : SUS303) or brass

## Maximum service pressure

- 1 MPa

## Shapes and dimensions



| No. | Part name |
|-----|-----------|
| ①   | Ball      |
| ②   | Cap       |
| ③   | Adapter   |

NPT thread is also available.

## Model and Model Number representing

$$\frac{1/4}{\text{Connecting threads (pipe end)}} \times \frac{1/4}{\text{Connecting threads (nozzle end)}}$$

## Standard type model number list

| Class     | Connecting threads |            | Dimensions (mm) |     |
|-----------|--------------------|------------|-----------------|-----|
|           | Pipe end           | Nozzle end | φD              | L   |
| 1/4 × 1/4 | R 1/4              | R 1/4      | 40              | 95  |
| 3/8 × 3/8 | R 3/8              | R 3/8      | 50              | 115 |
| 1/2 × 1/2 | R 1/2              | R 1/2      | 50              | 125 |
| 3/4 × 3/4 | R 3/4              | R 3/4      | 60              | 140 |
| 1 × 1     | R 1                | R 1        | 70              | 160 |