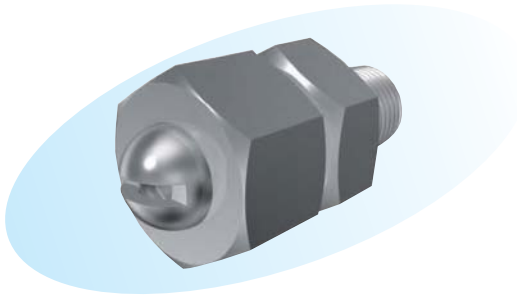


Vapor Nozzles Flat Type



▶ Features

- Wide-angle air jet nozzles with a spray angle of 80°.

▶ Applications

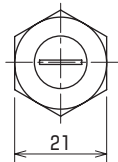
- Removal of moisture, oil, and stains.
- Drying
- Air curtains

▶ Materials

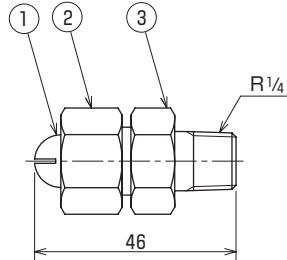
- Stainless steel (standard material: SUS303)
- Brass

Shapes and dimensions

● KSTTA type



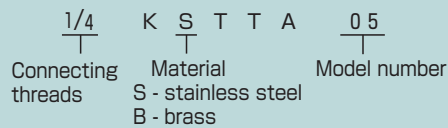
NPT thread is also available.



No.	Part name
①	Nozzle tip
②	Cap
③	Adapter

Weight(g)	60
-----------	----

● Model and Model Number representing



● Standard type model number list

Connecting threads	Model	Model number	Minimum orifice diameter (mm)	Air flow rate (L/min (nor)) at following pressure (MPa)						Spray angle	
				0.1	0.2	0.3	0.4	0.5	0.6		0.7
1/4	KSTTA	03	0.7	48	72	96	120	143	167	191	Approx. 80°
		04	0.8	64	96	128	159	191	223	254	Approx. 80°
		05	0.9	80	120	160	199	239	278	318	Approx. 80°
		07	1.0	113	168	224	279	334	390	445	Approx. 80°
		10	1.2	161	240	319	398	478	557	636	Approx. 80°