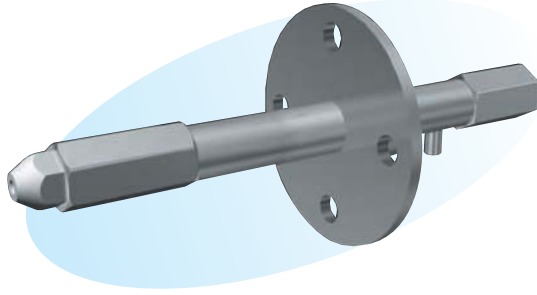


■ KAM Nozzles (to Cool Gases) Single Mist



► Features

- Easy to maintain.
- Large orifice diameter for cooling water.

► Applications

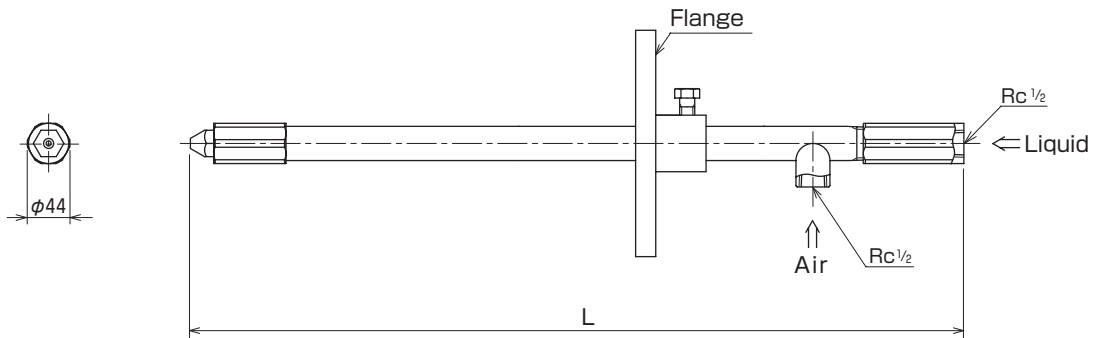
- Exhaust gas cooling in waste incineration plants and desuperheating tower.
- Atomizing of lime hydrate slurry.

► Material

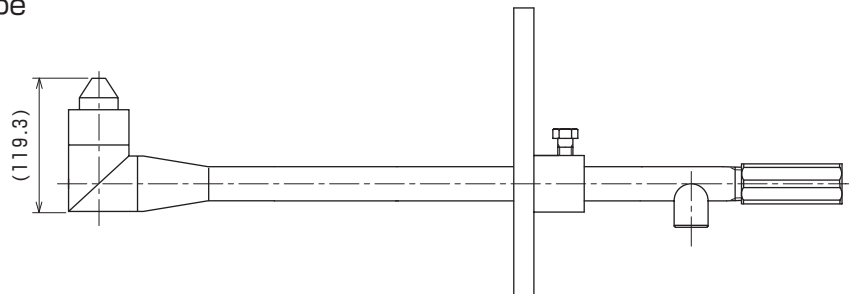
- Principal parts : Stainless steel (Standard material : SUS316L)

Shapes and dimensions

● Straight type



● Elbow type



NPT thread is also available.

※Dimension L and flange size are to be specified by the customer.

● Model and Model Number representing

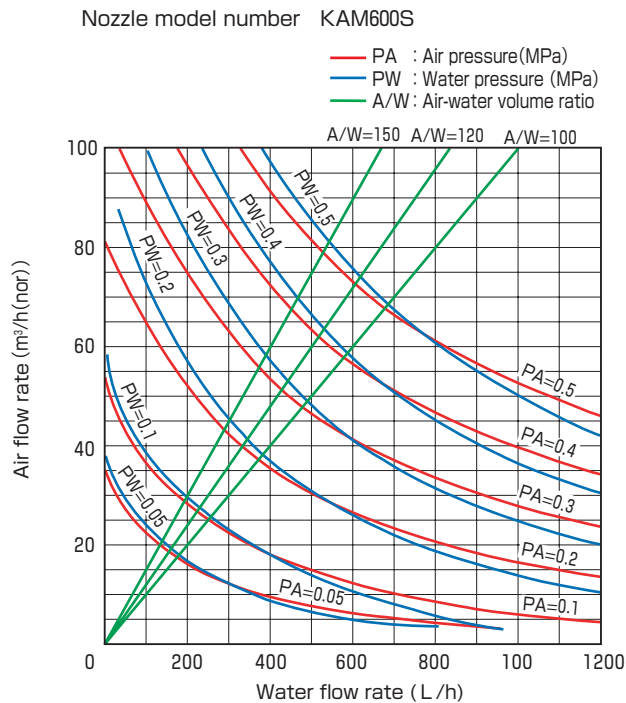
KAM 700S
Model number

● Standard type model number list

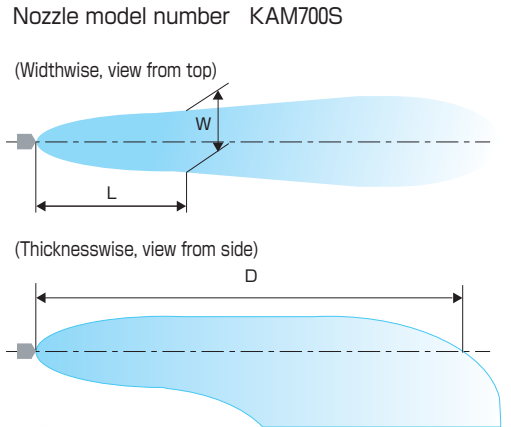
Model	Model number	Minimum orifice diameter for liquid (mm)	Air-water volume ratio	Water flow rate (L/h) at following water pressure (MPa)			
				0.2	0.3	0.4	0.5
KAM	360S	4.5	100	230	290	350	410
			150	180	230	280	320
			200	150	190	230	280
	600S	7.5	100	370	480	580	680
			150	290	370	440	530
			200	240	300	370	430
	700S	8.2	100	440	560	680	800
			150	350	440	540	620
			200	290	370	440	530
	850S	8.7	100	540	700	850	1000
			150	420	550	670	780
			200	350	460	560	660
	1000S	10.0	100	660	770	990	1160
			150	530	650	780	900
			200	440	540	650	770
	1150S	11.4	100	740	940	1150	1370
			150	580	740	890	1080
			200	480	600	740	890

● Performance data

Characteristic curves



Spray patterns



Air flow rate (m³/h (nor))	Water flow rate (L/h)	Air-water volume ratio	Spray pattern value (mm)		
			D	L	W
50	500	100	8000	500	200
				1000	300
				2000	600
				3000	800