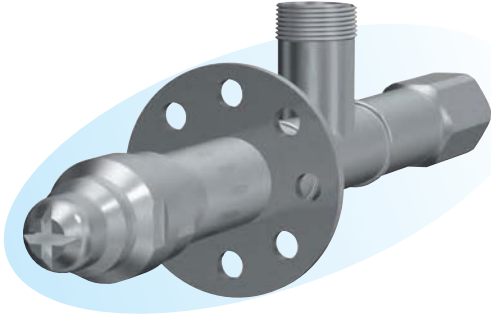


KAM Nozzles (to Cool Gases) KAML Type



► Features

- Atomizing by blower air (low-pressure air at air-water volume ratio of 250).
- Light weight and compact design.
- Wide-area spraying.

► Applications

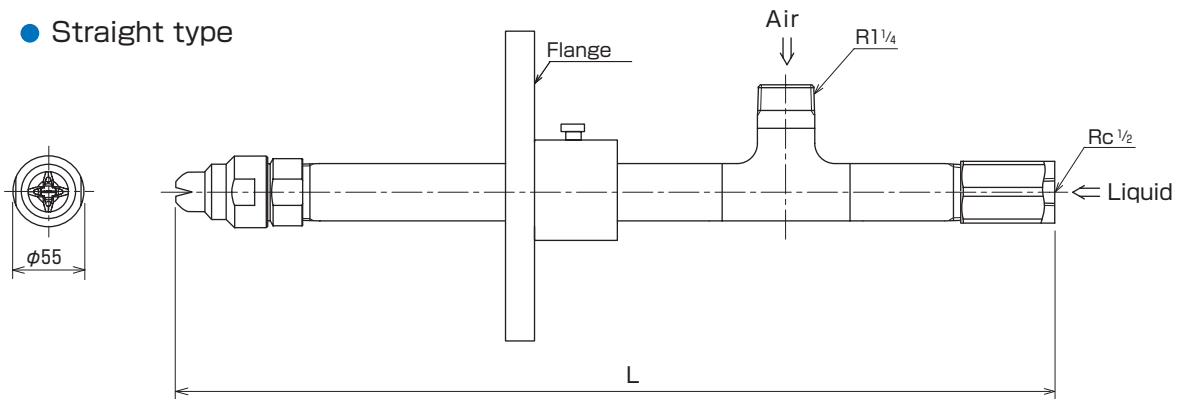
- Exhaust gas cooling in waste incineration plants and desuperheating tower.

► Material

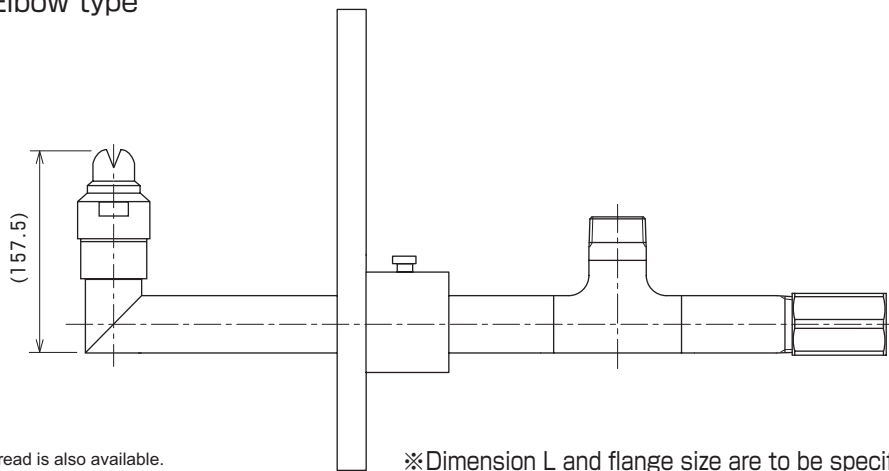
- Principal parts : Stainless steel (Standard material : SUS316L)

Shapes and dimensions

● Straight type



● Elbow type



NPT thread is also available.

※Dimension L and flange size are to be specified by the customer.

● Model and Model Number representing

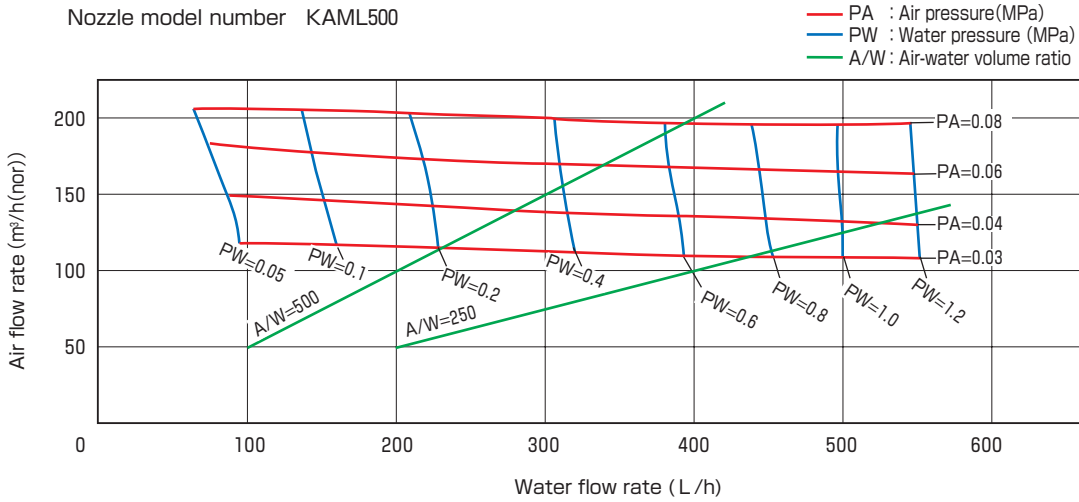
KAML 500
Model number

● Standard type model number list

Model	Model number	Minimum orifice diameter for liquid (mm)	Air pressure (MPa)	Water flow rate (L/min) and air flow rate (m ³ /h (nor)) at following water pressure (MPa)												Spray angle
				0.05		0.1		0.2		0.4		0.8		1.2		
				Water	Air	Water	Air	Water	Air	Water	Air	Water	Air	Water	Air	
KAML	300	0.9	0.03	60	75	90	75	138	73	192	71	276	68	336	67	40°
			0.04	54	87	90	86	138	85	192	83	276	81	336	81	
			0.06	42	112	78	110	132	108	186	105	270	102	330	100	
			0.08	30	130	72	129	126	128	186	125	270	122	330	121	
	500	1.1	0.03	96	119	162	117	228	114	318	111	456	108	552	108	40°
			0.04	90	141	156	137	228	134	318	130	450	131	552	131	
			0.06	78	175	144	171	222	166	312	164	444	163	546	163	
			0.08	66	206	138	206	210	202	306	199	438	195	546	195	
	600	1.4	0.03	114	139	192	136	276	134	390	130	552	126	672	125	40°
			0.04	102	165	186	162	270	158	384	155	546	149	666	148	
			0.06	90	203	174	201	264	199	378	197	540	194	660	193	
			0.08	72	239	156	236	258	234	372	230	534	226	660	225	
	750	1.6	0.03	138	160	240	159	336	155	474	153	672	148	822	146	40°
			0.04	132	192	234	189	330	187	474	184	672	179	822	177	
			0.06	108	241	216	237	324	234	468	231	666	227	816	226	
			0.08	84	295	198	291	312	286	462	281	660	275	810	273	
	1000	3.0	0.03	204	194	306	192	444	191	630	190	888	186	1080	184	40°
			0.04	198	224	300	223	444	222	630	222	888	220	1080	220	
			0.06	180	287	288	285	432	284	624	283	876	280	1074	280	
			0.08	162	341	276	337	426	336	618	334	870	333	1074	333	

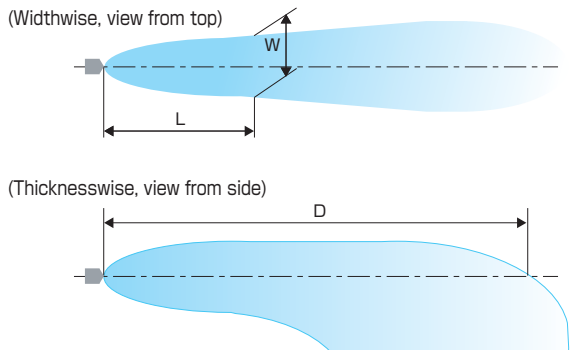
● Performance data

Characteristic curves



Spray patterns

Nozzle model number KAML500



Air flow rate (m ³ /h (nor))	Water flow rate (L/h)	Air-water volume ratio	Spray pattern value (mm)			
			D	W at L		
				1000	2000	3000
75	200	375	5500	450	600	700
75	100	750	5000	420	550	700
125	300	417	6000	470	650	750
125	100	1250	5500	450	600	700
150	400	375	6000	500	700	800
150	200	750	5500	450	650	750
250	600	417	6000	600	800	900
250	200	1250	6000	550	750	850