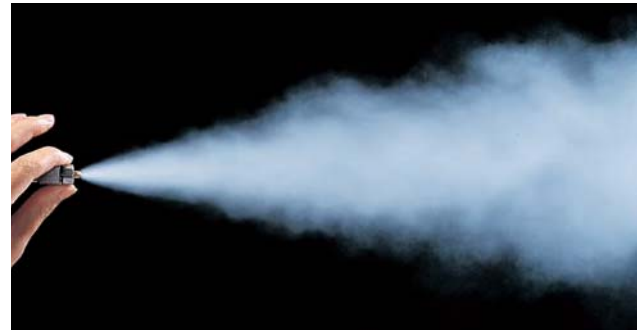
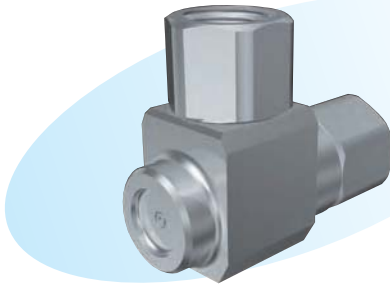


Mini Mist Nozzles External Mixing Type



► Features

- Flow rate controllable within a wide range, from very small to relatively large.
- Compact and lightweight nozzles for connection in a limited space.
- Quick-drying mist.
- Simple structure for resistance to clogging and for easy overhaul cleaning.
- Spray by siphon system.

► Applications

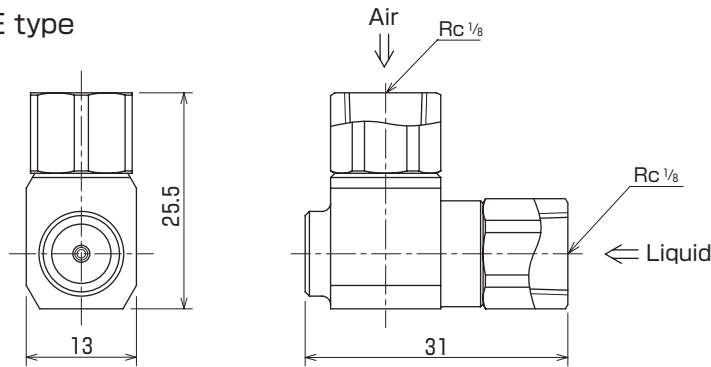
- Flower cultivation, fountains, cooling of gases, spraying of chemicals, deodorization, humidification, etc.

► Materials

- Stainless steel (standard material: SUS303) or brass

Shapes and dimensions

● KSMME type



Weight(g) 35

NPT thread is also available.

● Model and Model Number representing

K S M M E 04-10-13
 | | | | |
 Material Model number
 S - stainless steel
 B - brass

● Standard type model number list

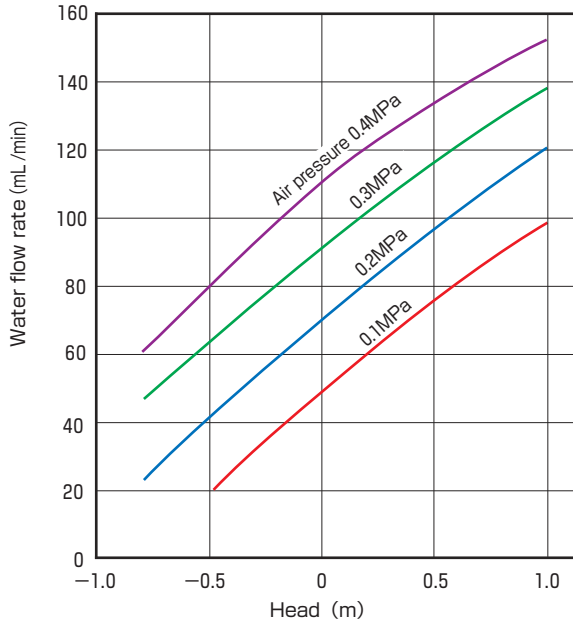
Model	Model number	Minimum orifice diameter for liquid (mm)	Air pressure (MPa)	Air flow rate (L/min(nor))	Water flow rate (mL/min) at following pressure head (m)						Spray angle	
					-0.8	-0.5	-0.3	0	0.3	0.5		1.0
KSMME	04-10-13	0.4	0.1	11			12	18	22	26	32	18°
			0.2	17	8	16	20	24	28	31	38	
			0.3	23	15	21	24	29	33	36	42	
			0.4	29	20	25	29	34	37	40	46	
			0.5	34	23	28	32	37	41	44	50	
	07-12-18	0.7	0.1	29		20	32	50	65	76	100	18°
			0.2	44	22	43	56	72	86	98	121	
			0.3	58	45	65	75	92	107	118	138	
			0.4	73	60	80	94	110	124	134	152	
			0.5	87	71	94	106	122	134	142	160	
	10-15-20	1.0	0.1	28		14	50	88	126	148	196	18°
			0.2	42	9	55	82	122	160	180	225	
			0.3	56	40	86	111	155	190	210	254	
			0.4	70	67	108	135	180	215	234	274	
			0.5	84	82	130	158	200	232	250	292	

Note: Blanks for water flow rate indicate the ceasing of spray.

● Performance data

Characteristic curves

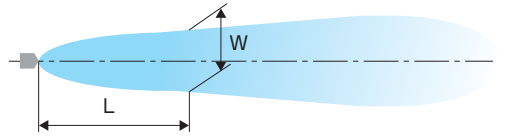
Nozzle model number KSMME 07-12-18



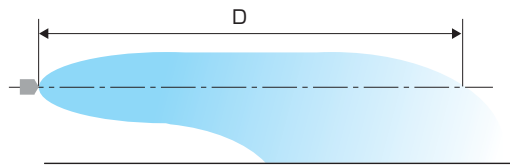
Spray pattern

Nozzle model number KSMME 07-12-18

(Widthwise, view from top)



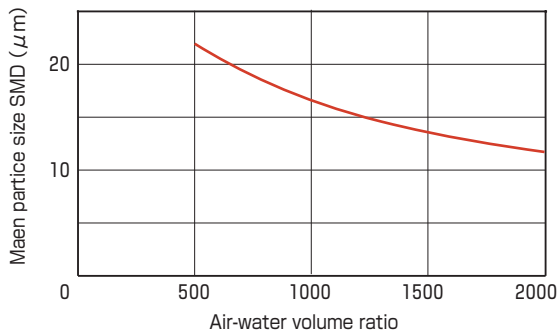
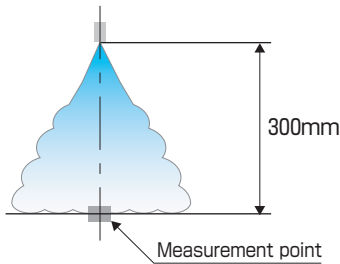
(Thicknesswise, view from side)



Air pressure (MPa)	Water pressure (MPa)	Air flow rate (L/min) (nor)	Water flow rate (mL/min)	Air-water volume ratio	Spray pattern value (mm)		
					D	L	W
0.3	0	58	92	630	2000	200	70
						500	180
						1000	300

Particle size vs. air-water volume ratio graph

Nozzle model number KSMME 07-12-18
Water flow rate 50mL/min



Particle size and velocity distribution graph

Nozzle model number KSMME 07-12-18
Air flow rate 75L/min (nor)
Water flow rate 50mL/min
Air-water volume ratio 1500

