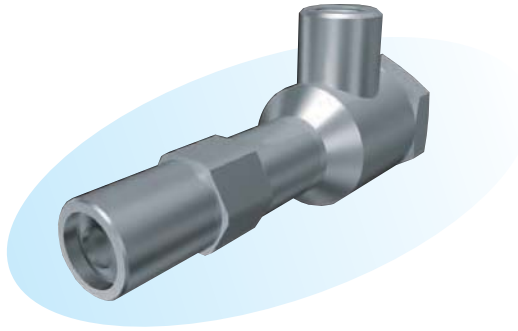


Round Mist Nozzles



Features

- Uniform water flow distribution.
- Provision of a large cooling area.
- Full-cone spray pattern.

Applications

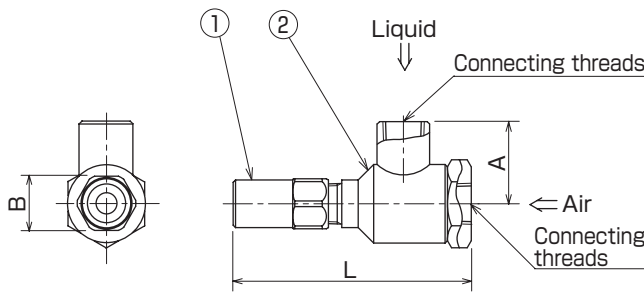
- Secondary cooling at continuous casting machine.
- Cooling of gases.
- Atomization of waste water.

Material

- Nozzle tip : stainless steel (standard material: SUS303) or brass
- Mixing body: stainless steel (standard material: SUS303 and SUS304)

Shapes and dimensions

KSAMF type

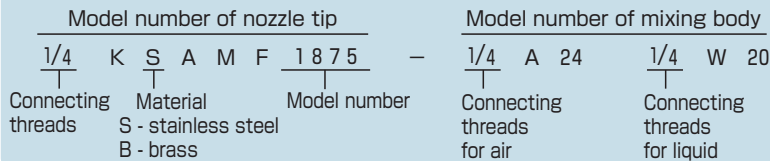


| No. | Part name |
|-----|-------------|
| ① | Nozzle tip |
| ② | Mixing body |

| Model | Dimensions (mm) | | | Connecting threads | | Weight (g) |
|-----------|-----------------|----|-----|--------------------|--------|------------|
| | A | B | L | Liquid | Air | |
| 1/4 KSAMF | 34.5 | 17 | 100 | Rc 1/4 | Rc 1/4 | 200 |
| 3/8 KSAMF | 34.5 | 21 | 100 | Rc 3/8 | Rc 3/8 | 350 |
| 1/2 KSAMF | 49 | 26 | 140 | Rc 1/2 | Rc 1/2 | 850 |

NPT thread is also available.

Model and Model Number representing



Standard type model number list

| Model | Model number | Model number of mixing body | Minimum orifice diameter for liquid (mm) | Air pressure (MPa) | Water flow rate (L/min) and air flow rate (m³/h (nor)) at following water pressure (MPa) | | | | | | | | | | Spray angle |
|-----------|--------------|-----------------------------|--|--------------------|--|------|-------|------|-------|------|-------|------|-------|------|-------------|
| | | | | | 0.1 | | 0.2 | | 0.3 | | 0.4 | | 0.5 | | |
| | | | | | Water | Air | Water | Air | Water | Air | Water | Air | Water | Air | |
| 1/4 KSAMF | 1875 | 1/4 A24 1/4 W20 | 2.0 | 0.1 | 1.9 | 5.0 | 2.8 | 4.6 | 3.5 | 4.2 | 3.9 | 3.9 | 4.3 | 3.5 | 約70° |
| | | | | 0.2 | 1.7 | 8.0 | 2.6 | 7.9 | 3.3 | 7.6 | 3.9 | 7.4 | 4.3 | 7.2 | |
| | | | | 0.3 | 1.5 | 10.4 | 2.4 | 10.4 | 3.1 | 10.3 | 3.7 | 10.2 | 4.2 | 10.0 | |
| 3/8 KSAMF | 2980 | 3/8 A30 3/8 W28 | 2.2 | 0.1 | 3.6 | 7.0 | 5.4 | 7.0 | 6.8 | 6.2 | 7.8 | 5.6 | 8.6 | 4.7 | 約70° |
| | | | | 0.2 | 3.0 | 12.5 | 4.9 | 12.0 | 6.3 | 11.6 | 7.4 | 11.0 | 8.5 | 10.0 | |
| | | | | 0.3 | 2.5 | 16.5 | 4.4 | 16.5 | 5.8 | 16.4 | 7.0 | 16.0 | 8.1 | 15.5 | |
| 1/2 KSAMF | 5885 | 1/2 A40 1/2 W36 | 3.5 | 0.1 | 6.1 | 14.8 | 9.4 | 12.0 | 12.0 | 10.0 | 14.0 | 8.7 | 15.4 | 7.7 | 約70° |
| | | | | 0.2 | 5.1 | 22.5 | 8.4 | 21.5 | 10.9 | 20.4 | 13.1 | 19.2 | 14.9 | 18.0 | |
| | | | | 0.3 | 4.2 | 29.7 | 7.4 | 29.7 | 10.0 | 29.0 | 12.1 | 28.0 | 14.1 | 27.0 | |