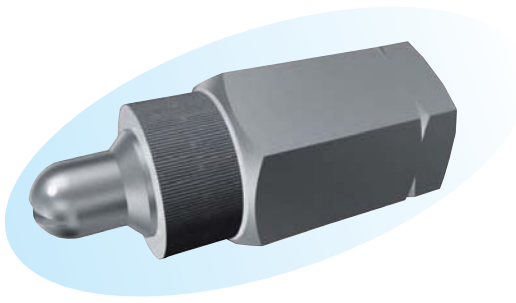


## PAC Nozzles



### ► Features

- High flow rate yet relatively small droplets size.
- Large orifice diameter yet small droplets size.
- Wide-angle flat spray pattern.

### ► Applications

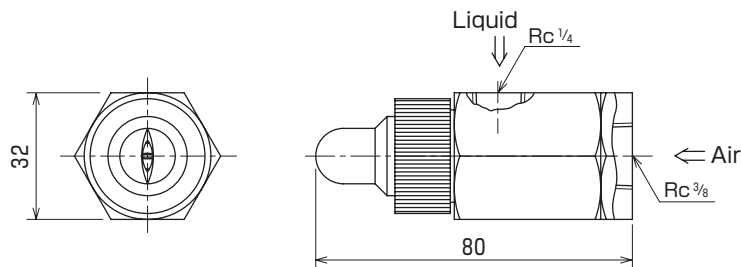
- Coating and treatment after galvanization of steel sheets.
- Humidification in paper making and humidification of air and other gases.
- Spraying of chemicals, etc.

### ► Materials

- Stainless steel (standard material : SUS303) or brass

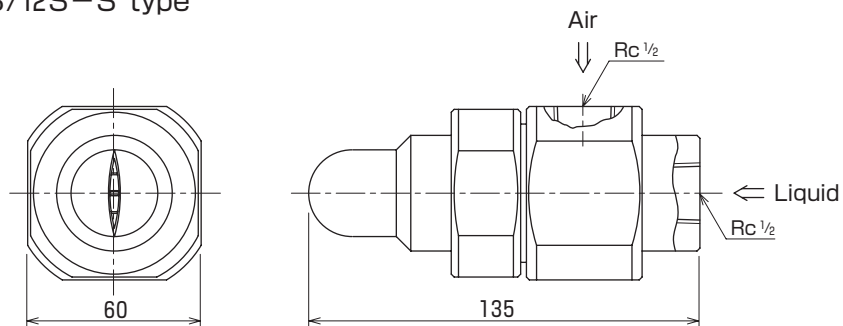
### Shapes and dimensions

#### ● PAC 26S/6S-S type



Weight(g) 320

#### ● PAC 77S/12S-S type



Weight(g) 1100

NPT thread is also available.

#### ● Model and Model Number representing

PAC	<u>26S/6S</u>	-	<u>S</u>
	Model number		Material
			S - stainless steel
			B - brass

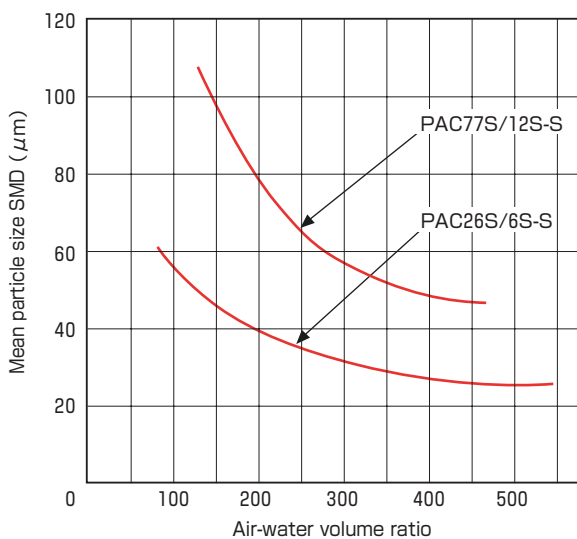
● Standard type model number list

Model	Model number	Minimum orifice diameter for liquid (mm)	Air pressure (MPa)	Water flow rate (L/min) and air flow rate (m³/h (nor)) at following water pressure (MPa)										Spray angle at following water pressure (MPa) (Spray distance: 300 mm)			
				0.2		0.3		0.4		0.5		0.6		0.3	0.4	0.5	0.6
				Water	Air	Water	Air	Water	Air	Water	Air	Water	Air				
PAC	26 S/6 S	1.4	0.2	2.9	20.4	4.3	17.0	5.5	15.8	6.4	14.6	7.4	13.6	100°	110°	118°	123°
			0.3	1.8	29.0	3.4	27.8	4.7	25.0	5.7	22.9	6.7	20.6	92°	106°	115°	120°
			0.4	1.1	36.9	2.8	34.7	4.3	32.6	5.5	30.2	6.5	27.8	80°	90°	105°	112°
			0.5	0.4	42.1	1.9	41.7	3.4	40.5	4.6	39.3	5.6	39.3	74°	87°	99°	109°
			0.6			1.3	48.8	2.7	47.5	3.9	45.0	5.1	41.1	65°	85°	96°	109°

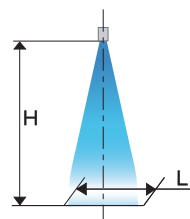
Model	Model number	Minimum orifice diameter for liquid (mm)	Air pressure (MPa)	Water flow rate (L/min) and air flow rate (m³/h (nor)) at following water pressure (MPa)										Spray angle at following water pressure (MPa) (Spray distance: 300 mm)			
				0.05		0.07		0.1		0.12		0.15		0.07	0.1	0.12	0.15
				Water	Air	Water	Air	Water	Air	Water	Air	Water	Air				
PAC	77 S/12 S	2.0	0.20	2.0	45.9	3.3	45.9	4.9	45.9	5.7	45.9	6.8	45.9	100°	103°	110°	121°
			0.25	1.5	49.9	2.7	49.9	4.2	49.9	5.1	49.9	6.3	49.9	94°	103°	106°	111°
			0.30	1.1	57.8	2.1	57.4	3.5	56.8	4.5	56.8	5.8	56.8	93°	106°	111°	116°
			0.35	0.7	66.0	1.6	65.5	3.0	65.0	3.9	64.1	6.0	63.8	85°	101°	106°	111°

● Performance data

Air-water volume ratio vs. particle size graph



Spray thickness



Nozzle model number	Spray distance H (mm)	Spray thickness L (mm)
PAC26S/6S	300	110~160
	600	200~250
PAC77S/12S	300	120~190
	600	210~350