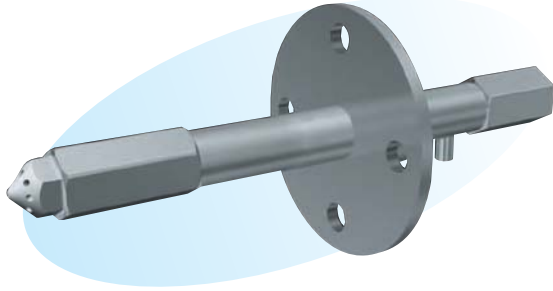


## KAM Nozzles (to Cool Gases) Wide-angle Mist Series



### ► Features

- Spray angle capacity: 40° to 80°.
- Wide-area cooling.

### ► Applications

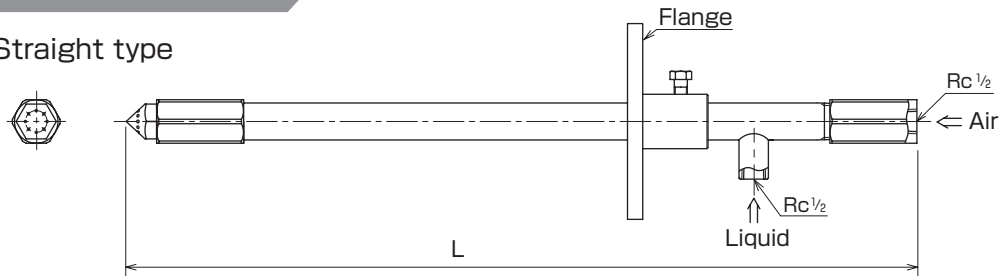
- Exhaust gas cooling in refuse incineration plants and desuperheating tower.

### ► Material

- Principal parts : Stainless steel (Standard material : SUS316L)

### Shapes and dimensions

#### ● Straight type



#### ● Elbow type



NPT thread is also available.

※Dimension L and flange size are to be specified by the customer.

● Model and Model Number representing KAM 27×8-70

Model number

### ● Standard type model number list

Model	Model number	Minimum orifice diameter for liquid (mm)	Air-water volume ratio	Water flow rate (L/h) at following water pressure (MPa)			
				0.1	0.2	0.3	0.4
KAM	27×8-70	2.7	100	210	310	400	470
			150	170	250	320	380
			200	130	200	260	320
	40×8-70	4.0	100	470	680	860	1040
			150	360	530	680	830
			200	300	440	560	710
	50×8-70	5.0	100	600	890	1140	1390
			150	470	700	910	1100
			200	400	580	760	930