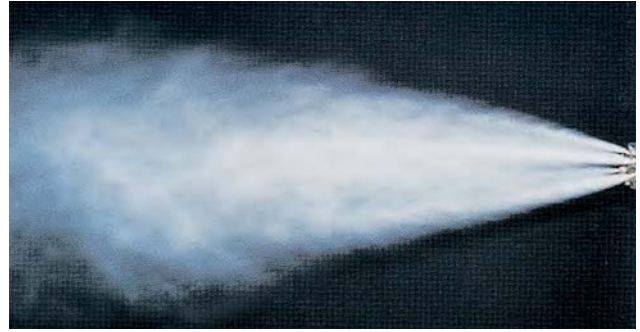
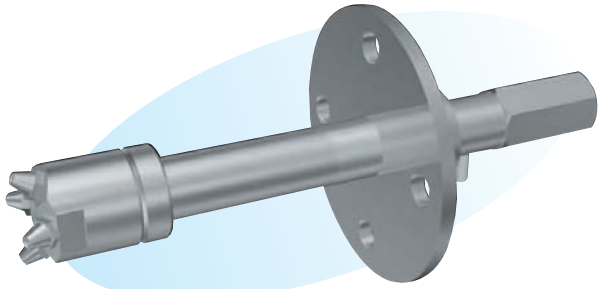


KAM Nozzles (to Cool Gases) Multi-mist Series



► Features

- Multi-nozzle head construction to produce a stable mist with variable angle of 40° to 50°.

► Applications

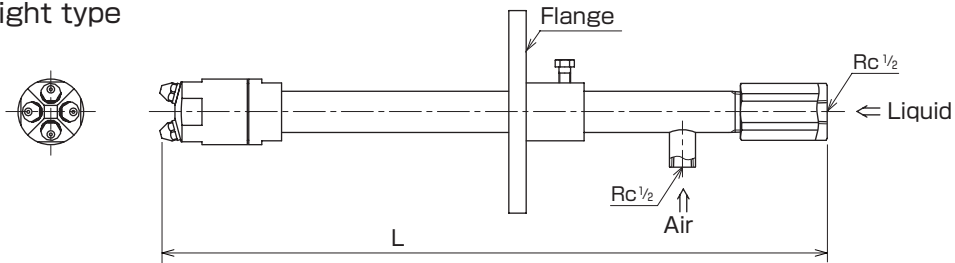
- Exhaust gas cooling in refuse incineration plants and desuperheating tower.

► Material

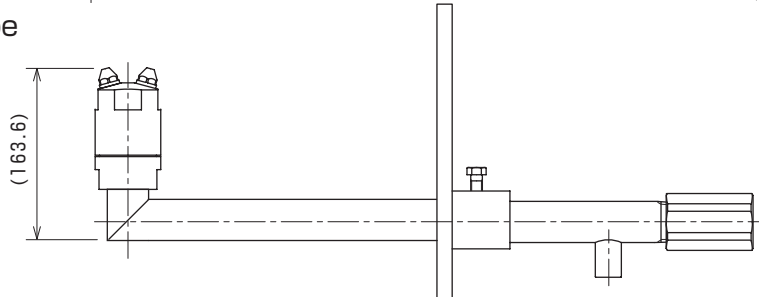
- Principal parts : Stainless steel (Standard material : SUS316L)

Shapes and dimensions

● Straight type



● Elbow type



NPT thread is also available.

※Dimension L and flange size are to be specified by the customer.

● Model and Model Number representing KAM 125S×4
Model number

● Standard type model number list

Model	Model number	Minimum orifice diameter for liquid (mm)	Air-water volume ratio	Water flow rate (L/h) at following water pressure (MPa)			
				0.1	0.2	0.3	0.4
KAM	65 SX4	2.7	100	130	170	220	260
			150	100	140	170	200
			200	80	110	140	170
	125 SX4	3.4	100	220	320	410	480
			150	170	240	310	370
			200	130	200	250	310
	240 SX4	4.4	100	440	640	820	980
			150	350	490	640	780
			200	290	420	530	650
	250 SX6	4.7	100	680	1030	1300	1590
			150	540	800	1020	1240
			200	460	670	860	1040

