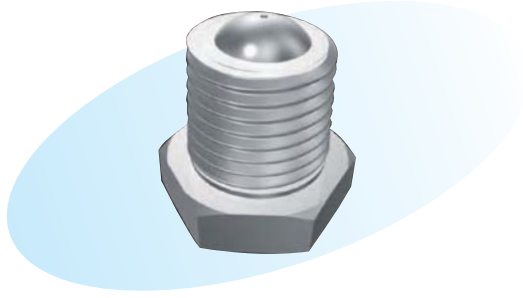


Straight Jet Nozzles Type C



► Features

- When mounted on a pipe, the nozzle orifice projects inside the pipe, and is highly resistant to clogging.

► Applications

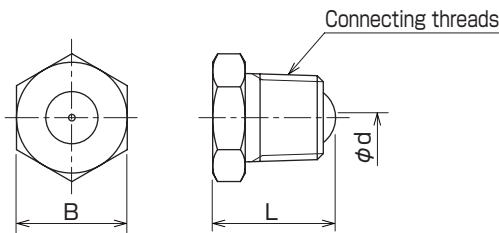
- Washing of paper-making felts, screens, vehicles, returnable boxes, mechanical systems, parts, bottles, etc.

► Materials

- Nozzle body: Stainless steel (standard material: SUS303)
- Nozzle tip : Stainless steel, cemented carbide, or ceramics

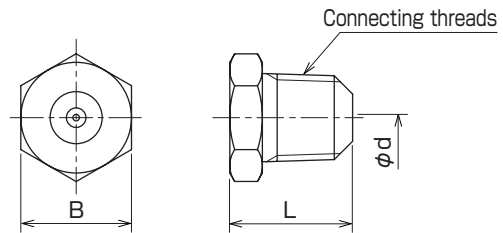
Shapes and dimensions

● KSJ···C type



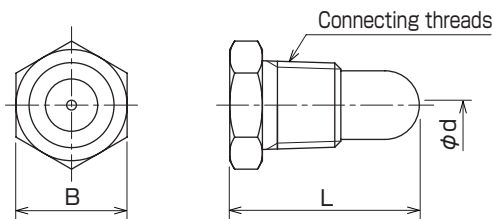
Model	Dimension (mm)		Connecting threads	Weight (g)
	B	L		
1/8 KSJ···C	12	15	R 1/8	15
1/4 KSJ···C	17	19	R 1/4	25

● KCJ···C and KCEJ···C types



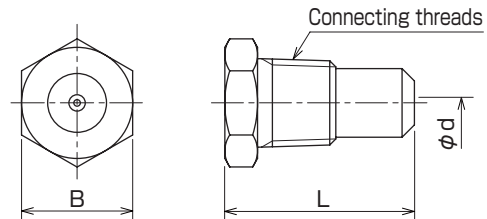
Model	Dimension (mm)		Connecting threads	Weight (g)
	B	L		
1/8 KCJ···C	12	15	R 1/8	15
1/4 KCJ···C	17	19	R 1/4	25

● KSJ···CL type



Model	Dimension (mm)		Connecting threads	Weight (g)
	B	L		
1/8 KSJ···CL	12	29	R 1/8	20
1/4 KSJ···CL	17	29	R 1/4	40

● KCJ···CL and KCEJ···CL types



Model	Dimension (mm)		Connecting threads	Weight (g)
	B	L		
1/8 KCJ···CL	12	29	R 1/8	20
1/4 KCJ···CL	17	29	R 1/4	40

NPT thread is also available.

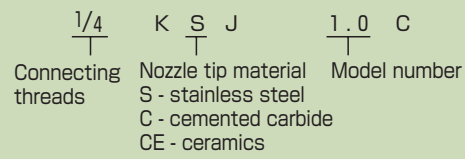
● Standard type model number list

●: Model availability

Connecting threads	Model			Model number	Minimum orifice diameter (mm)	Flow rate (L/min) at following pressure (MPa)							
	KSJ	KCEJ	KCJ			0.3	0.5	0.7	1	2	3	4	5
1/8 1/4			●	0.3	0.3	0.07	0.09	0.10	0.12	0.17	0.21	0.25	0.28
			●	0.4	0.4	0.12	0.15	0.18	0.22	0.31	0.38	0.44	0.49
			●	0.5	0.5	0.19	0.24	0.29	0.34	0.48	0.59	0.68	0.77
			●	0.6	0.6	0.27	0.35	0.41	0.49	0.70	0.85	0.99	1.10
	●	●	●	0.8	0.8	0.48	0.62	0.73	0.88	1.24	1.52	1.75	1.96
	●	●	●	1.0	1.0	0.75	0.97	1.15	1.37	1.94	2.4	2.7	3.1
	●	●	●	1.2	1.2	1.08	1.39	1.65	1.97	2.8	3.4	3.9	4.4
●	●	●	1.5	1.5	1.69	2.2	2.6	3.1	4.4	5.3	6.2	6.9	
●	●	●	2.0	2.0	3.0	3.9	4.6	5.5	7.7	9.5	10.9	12.2	

Note: Flow rates are just for reference as they depend on orifice diameter.

● Model and Model Number representing



● Nozzle mounting example

