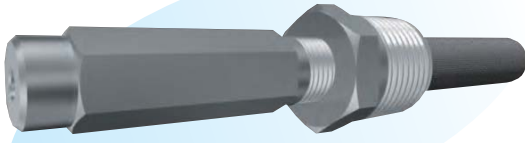


Needle Jet Nozzles



Features

- High impact force without scatter of spray.
- Nozzle orifice of highly wear-resistant material.

Applications

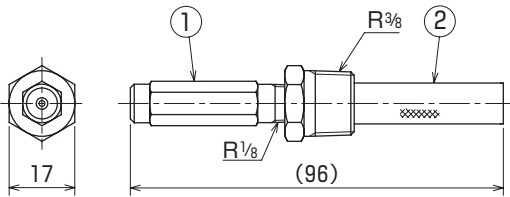
- Edge cutting in paper making
- Washing inside dandy rollers
- Local washing of parts in precision machines.
- Injection of chemicals, deburring, etc.

Materials

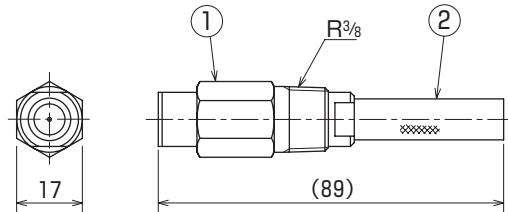
- Nozzle tip : Cemented carbide or ruby
- Nozzle case: Stainless steel (standard material: SUS303)
- Filter : Stainless steel (standard material: SUS304)

Shapes and dimensions

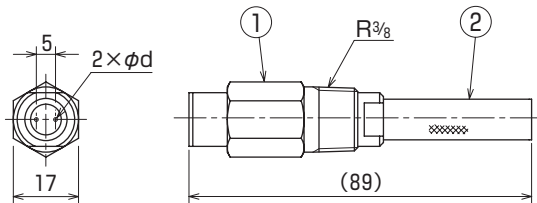
● 1/8 KCJ···D type



● 3/8 KCJ···D type



● 3/8 KCJ···D×2 type (double-needle type)



NPT thread is also available.

No.	Part name
①	Nozzle
②	Filter

Model	Weight (g)
1/8 KCJ···D	45
3/8 KCJ···D	60
3/8 KCJ···D×2	60

● Model and Model Number representing

1/4	K	C	J	1.0	D	× 2
Connecting threads	Nozzle tip material C - cemented carbide R - ruby			Model number	Number of orifices No symbol - 1 ×2 - 2	

● Standard type model number list

●: Model availability

Connecting threads	Model		Model number	Minimum orifice diameter (mm)	Flow rate (L/min) at following pressure (MPa)								Filter mesh
	KCJ	KRJ			0.3	1	1.5	2	2.5	3	4	5	
1/8 3/8	●	●	0.3 D	0.3	0.07	0.12	0.15	0.17	0.19	0.21	0.25	0.28	80
	●	●	0.4 D	0.4	0.12	0.22	0.27	0.31	0.35	0.38	0.44	0.49	
	●	●	0.5 D	0.5	0.19	0.34	0.42	0.48	0.54	0.59	0.68	0.77	
	●	●	0.6 D	0.6	0.27	0.49	0.60	0.70	0.78	0.85	0.99	1.10	
	●	●	0.7 D	0.7	0.37	0.67	0.82	0.95	1.06	1.16	1.34	1.49	50
	●	●	0.8 D	0.8	0.48	0.88	1.07	1.24	1.39	1.52	1.75	1.96	
	●	●	0.9 D	0.9	0.61	1.11	1.36	1.57	1.76	1.92	2.2	2.5	
	●	●	1.0 D	1.0	0.75	1.37	1.68	1.94	2.2	2.4	2.7	3.1	
●	●	1.2 D	1.2	1.08	1.97	2.4	2.8	3.1	3.4	3.9	4.4		

Note: Flow rates are just for reference as they depend on orifice diameter.

● Standard type model number list (double-needle type)

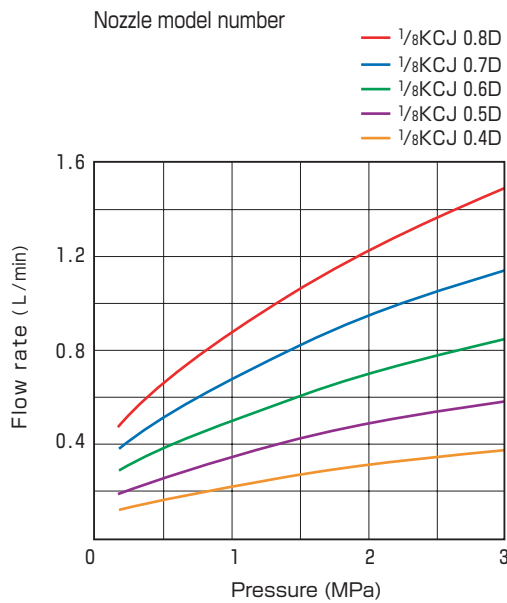
●: Model availability

Connecting threads	Model		Model number	Minimum orifice diameter (mm)	Flow rate (L/min) at following pressure (MPa)								Filter mesh
	KCJ	KRJ			0.3	1	1.5	2	2.5	3	4	5	
3/8	●	●	0.3D X2	0.3	0.14	0.24	0.29	0.34	0.38	0.42	0.48	0.54	80
	●	●	0.4D X2	0.4	0.24	0.44	0.54	0.62	0.70	0.76	0.88	0.98	
	●	●	0.5D X2	0.5	0.38	0.68	0.84	0.96	1.08	1.18	1.36	1.52	
	●	●	0.6D X2	0.6	0.54	0.98	1.20	1.40	1.56	1.70	1.98	2.2	
	●	●	0.7D X2	0.7	0.74	1.34	1.64	1.90	2.1	2.3	2.7	3.0	50
	●	●	0.8D X2	0.8	0.96	1.76	2.2	2.5	2.8	3.1	3.5	3.9	
	●	●	0.9D X2	0.9	1.22	2.2	2.7	3.1	3.5	3.9	4.4	5.0	
	●	●	1.0D X2	1.0	1.50	2.7	3.4	3.9	4.3	4.8	5.5	6.1	
●	●	1.2D X2	1.2	2.2	3.9	4.8	5.6	6.2	6.8	7.9	8.8		

Note: Flow rates are just for reference as they depend on orifice diameter.

● Performance data

Flow characteristic curves



Impact force characteristic curves

