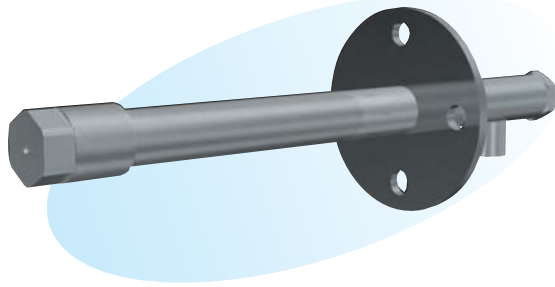


QC Nozzles Single-pore Type



► Features

- Spray flow rate can be controlled within the range of 10:1 by controlling return pressure with the constant supply pressure.
- The lower spray flow rate, the smaller droplets, with the constant supply pressure.

► Applications

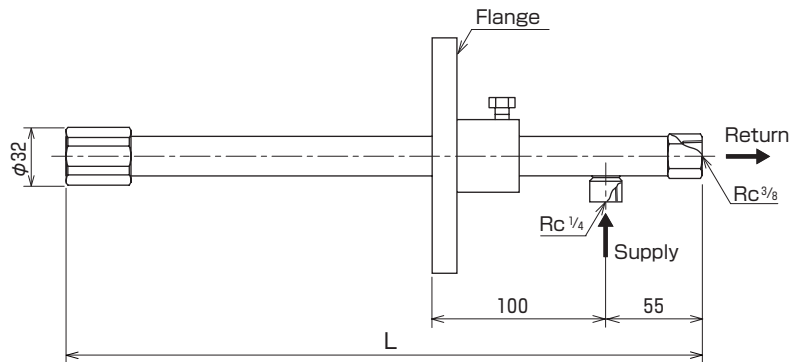
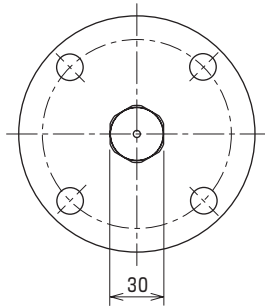
- Cooling of gases, washing, humidity control, etc.

► Material

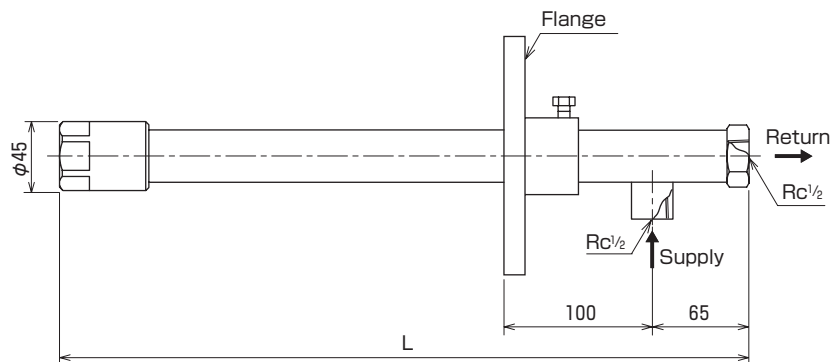
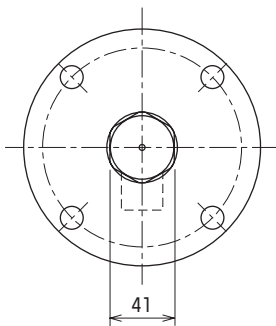
- Principal parts: Stainless steel (standard material: SUS316)

Shapes and dimensions

- Model number 01 to 015



- Model number 02 and above



※Dimension L and flange size are to be specified by the customer.

NPT thread is also available.

● Model and Model Number representing K S W C 0 4 5 Q C - T
 Model number

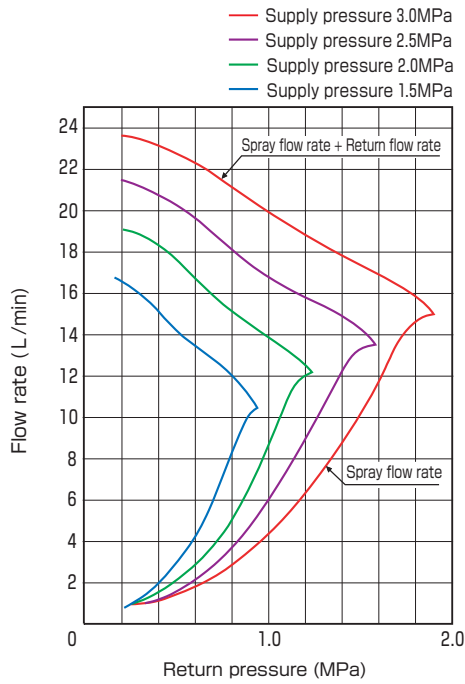
● Standard type model number list (at a supply pressure of 2 MPa)

Model	Model number	Standard spray flow rate (L/h)	Minimum orifice diameter (mm)	Spray flow rate (L/min) at following return pressure (MPa)				Spray angle at following return pressure (MPa)				Mean particle size SMD (μm)
				1.25, fully closed	1.0	0.6	0.2	1.25, fully closed	1.0	0.6	0.2	
KSWC	01	180	1.6	3.0	2.4	0.7	0.3	60°	73°	104°	120°	90
	015	240	2.0	4.0	3.3	1.5	0.4	60°	73°	104°	120°	95
	02	320	2.2	5.3	4.3	1.7	0.6	60°	73°	104°	120°	100
	025	400	2.6	6.7	4.7	1.8	0.7	60°	73°	104°	120°	110
	03	480	2.8	8.0	5.8	2.2	0.8	60°	73°	104°	120°	120
	037	600	2.9	10.0	7.5	2.5	1.0	60°	73°	104°	120°	130
	045	720	3.3	12.0	8.7	2.8	1.2	60°	73°	104°	120°	140
	053	850	3.5	14.2	9.4	3.2	1.4	60°	73°	104°	120°	150
	06	960	3.6	16.0	10.8	3.8	1.6	60°	73°	104°	120°	160
	067	1080	3.7	18.0	12.6	4.4	1.8	60°	73°	104°	120°	170
077	1240	3.9	20.6	15.6	5.4	2.1	60°	73°	104°	120°	180	
094	1500	4.3	25.1	20.0	7.2	2.5	60°	73°	104°	120°	190	

● Performance data

Flow rate characteristic curves

Nozzle model number KSWC 045QC-T



Spray angles

Nozzle model number KSWC 045QC-T

