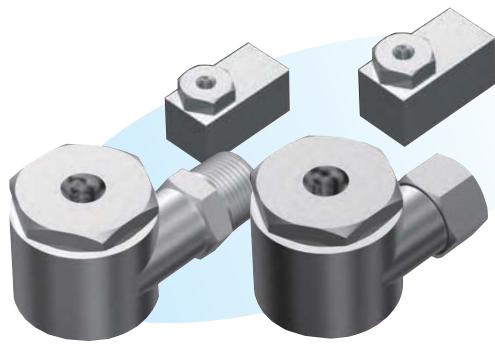


Whirl Spray Nozzles



► Features

- Nearly uniform flow distribution in the circumferential direction.
- No parts inside the nozzle ensuring clog-free operation.

► Applications

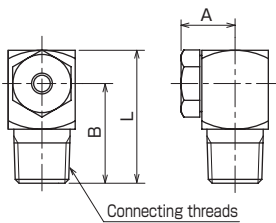
- Humidification, cooling, and absorption of gases.
- Cooling of return flow, dust prevention, defoaming, defrosting, and washing.
- Flue Gas desulfurization and spraying of chemicals.

► Materials

- Stainless steel (standard material: SUS303), brass, or nickel-based alloy
- Plastics (PTFE, PVC, or PP)
- Ceramics, etc.

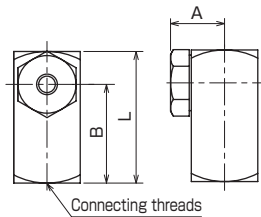
Shapes and dimensions

● KSW type with connecting threads R¹/₄ to R¹/₂



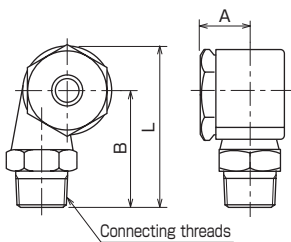
Model	Dimension(mm)			Connecting threads	Weight (g)
	A	B	L		
1/4 KSW	13	24	32	R ¹ / ₄	45
3/8 KSW	16	27	38	R ³ / ₈	80
1/2 KSW	19.5	32.5	45	R ¹ / ₂	135

● KSW····H type with connecting threads Rc¹/₄ to Rc¹/₂



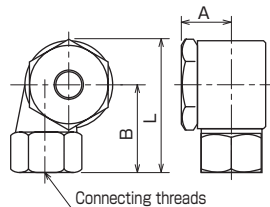
Model	Dimension(mm)			Connecting threads	Weight (g)
	A	B	L		
1/4 KSW····H	13	24	32	Rc ¹ / ₄	55
3/8 KSW····H	16	27	38	Rc ³ / ₈	105
1/2 KSW····H	19.5	32.5	45	Rc ¹ / ₂	160

● KSW type with connecting threads R³/₄ to R1



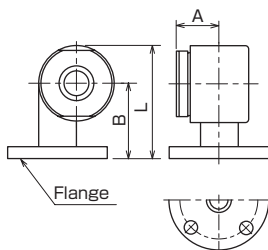
Model	Dimension(mm)			Connecting threads	Weight (kg)
	A	B	L		
3/4 KSW	26	61	84	R ³ / ₄	0.6
1 KSW	36	72	100	R 1	1.4

● KSW····H type with connecting threads Rc³/₄ to Rc 1¹/₂



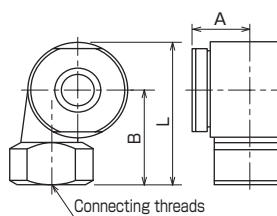
Model	Dimension(mm)			Connecting threads	Weight (kg)
	A	B	L		
3/4 KSW····H	27	45	68	Rc ³ / ₄	0.5
1 KSW····H	36	56	83.5	Rc 1	1.2
1 1/4 KSW····H	60	75	115	Rc 1 1/4	3.0
1 1/2 KSW····H	75	85	135	Rc 1 1/2	4.5

● KSW····F type, flanged system



Model	Dimension(mm)			Flange size	Weight (kg)
	A	B	L		
2 KSW····F	95	100	160	2B	8.2
2 1/2 KSW····F	125	115	188	2 1/2 B	11.6
3 KSW····F	150	130	215	3B	18.0
4 KSW····F	180	160	275	4B	28.0

● KSW····H type with connecting threads Rc2 to Rc4



Model	Dimension(mm)			Connecting threads	Weight (kg)
	A	B	L		
2 KSW····H	95	100	160	Rc 2	7.2
2 1/2 KSW····H	125	120	193	Rc 2 1/2	10.5
3 KSW····H	150	140	225	Rc 3	17.0
4 KSW····H	180	170	285	Rc 4	26.0

NPT thread is also available.

Flanges conform to JIS 5 K flanges as a standard specification.

● Model and Model Number representing

1/4	K S W	1 0 8 0
Connecting threads	Material S - stainless steel B - brass P - plastics	Model number

