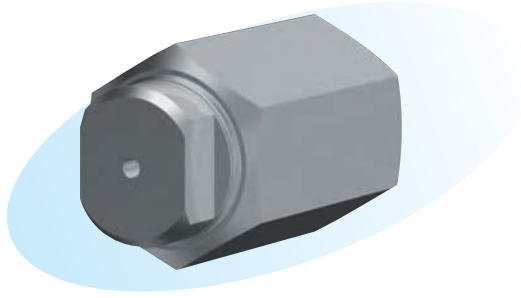


Hollow-cone Nozzles

● Single-pore type



► Features

- Less clogging of impurities because of simple internal structure.
- Relatively small droplets.
- Nearly uniform flow distribution in the circumferential direction.

► Applications

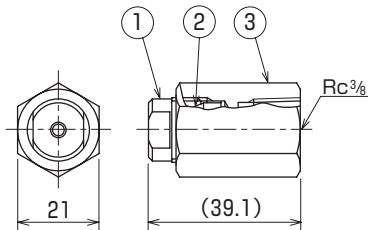
- Cooling of steel, venturi scrubbers, humidification and cooling of gases, absorption of gases, cooling of return flow, dust prevention, defoaming, defrosting, washing, exhaust gas desulphurization, spraying of chemicals, etc.

► Materials

- Stainless steel (standard material: SUS303) or brass

Shapes and dimensions

● Taper spiral core KSC type



NPT thread is also available.

No.	Part name
①	Nozzle tip
②	Spiral core
③	Adapter

Weight (g) 70

● Model and Model Number representing

K	S	C	0	1	5
Material			Model number		
S - stainless steel					
B - brass					

● Standard type model number list

Model	Model number	Minimum orifice diameter (mm)	Flow rate (L/min) at following pressure (MPa)							Spray angle of single pore at pressure 0.5 MPa	Body size of three-pore and seven-pore types	
			0.3	0.5	0.7	1.0	1.5	2.0	2.5			3.0
KSC	005	0.6	0.50	0.65	0.76	0.91	1.12	1.29	1.44	1.58	60°	Same
	008	0.7	0.80	1.03	1.22	1.46	1.79	2.1	2.3	2.5		
	01	0.9	1.00	1.29	1.53	1.83	2.2	2.6	2.9	3.2		
	015	1.0	1.50	1.91	2.3	2.7	3.3	3.8	4.3	4.7		
	018	1.2	1.80	2.3	2.8	3.3	4.0	4.7	5.2	5.7		
	02	1.3	2.0	2.6	3.1	3.7	4.5	5.2	5.9	6.4		
	025	1.4	2.5	3.3	3.9	4.6	5.6	6.5	7.3	8.0		
	03	1.5	3.0	3.9	4.6	5.5	6.7	7.8	8.7	9.5		
	035	1.5	3.5	4.5	5.4	6.4	7.8	9.1	10.1	11.1		
	04	1.6	4.0	5.2	6.1	7.3	8.9	10.3	11.5	12.6		
	045	1.6	4.5	5.8	6.9	8.2	10.0	11.6	13.0	14.2		
	05	1.7	5.0	6.4	7.6	9.1	11.2	12.9	14.4	15.8		
	06	1.8	6.0	7.8	9.2	11.0	13.5	15.6	17.4	19.0		
KSFC	008	0.6	0.80	1.03	1.22	1.46	1.79	2.1	2.3	2.5	60°	Small
	01	0.7	1.00	1.29	1.53	1.83	2.2	2.6	2.9	3.2		
	015	0.9	1.50	1.91	2.3	2.7	3.3	3.8	4.3	4.7		
	02	1.1	2.0	2.6	3.1	3.7	4.5	5.2	5.9	6.4		
	03	1.3	3.0	3.9	4.6	5.5	6.7	7.8	8.7	9.5		
	04	1.5	4.0	5.2	6.1	7.3	8.9	10.3	11.5	12.6	60°	Large
	06	1.6	6.0	7.8	9.2	11.0	13.5	15.6	17.4	19.0		
08	1.8	8.0	10.3	12.2	14.6	17.9	20.7	23.1	25.3			

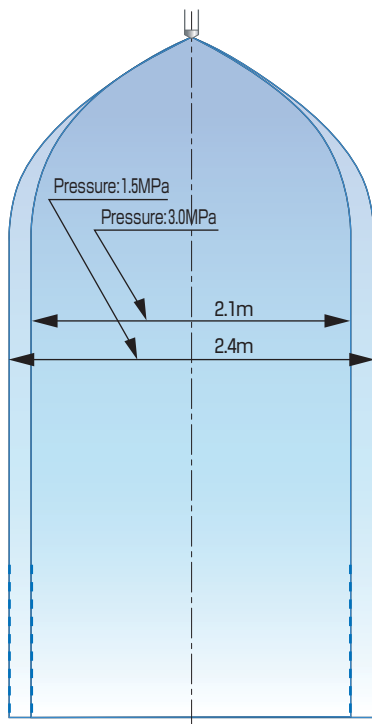
Notes: 1. Flow rates are calculated values using a water pressure of 0.3 MPa as a basis for calculation.
 2. Flow rates of the three-pore and seven-pore types are three and seven times, respectively, higher than the indicated values.

● Performance data

Spray patterns

Nozzle model number KSC 008-7 (central angle: 60°)

Downward spray



Horizontal spray

