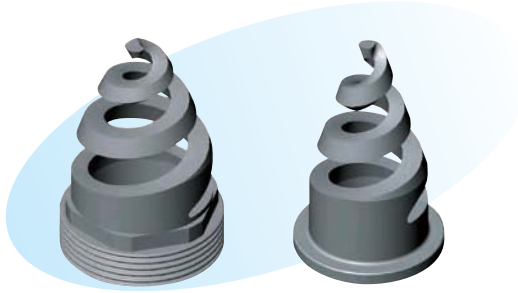


● Spiral nozzles



▶ Features

- Highly resistant to clogging.
- Large spray flow yet space-saving installation.



▶ Applications

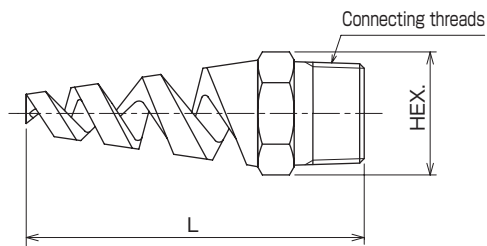
- Spraying of slurry in exhaust gas desulfurizers.

▶ Materials

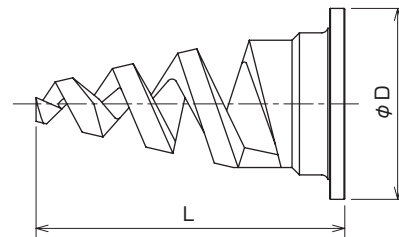
- Stainless steel, cobalt alloy, ceramics, etc.

Shapes and dimensions

● External-threaded KSP type



● Lap joint KSP·····RJ type



※Dimensions are determined according to user's specification requirements.