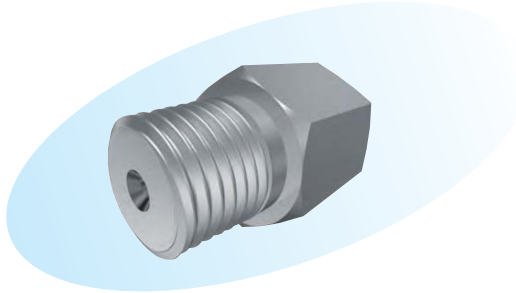


Other Nozzles

● Full-cone nozzles with threads at both ends ▶ Features



- Nearly uniform flow distribution.
- Both ends threaded for ease of mounting to spray inside piping or the like.

▶ Applications

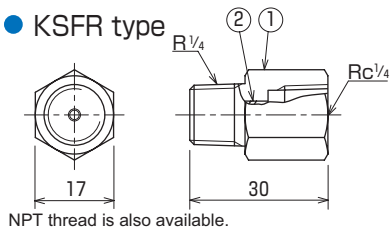
- Spraying into a pipe or box.

▶ Material

- Stainless steel (standard material: SUS303) or brass

Shapes and dimensions

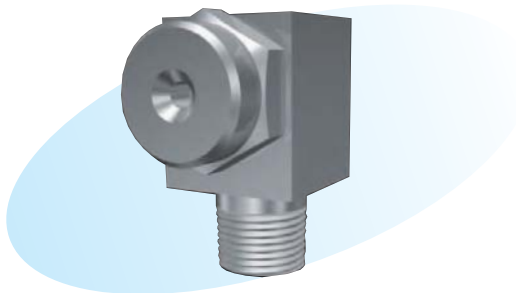
● KSFR type



NPT thread is also available.

No.	Part name
①	Nozzle body
②	Core

● Full-cone nozzles with elbow



▶ Features

- Useful when feeding a liquid in a direction at right angles with the spraying direction.

▶ Applications

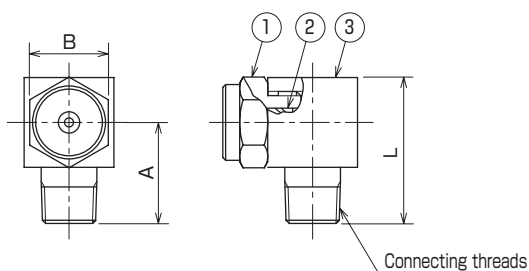
- Cooling, washing, defoaming, spraying of chemicals, dust prevention, fire prevention, etc.

▶ Materials

- Stainless steel (standard material: SUS303) or brass

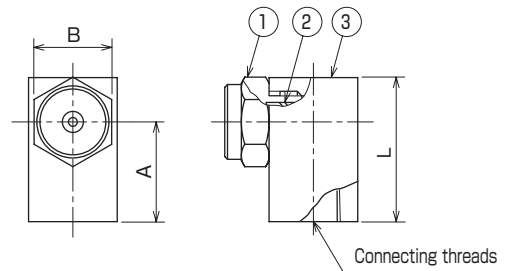
Shapes and dimensions

● KSFW type



Model	Dimension(mm)			Connecting threads
	A	B	L	
1/8 KSFW	18	14	26	R 1/8
1/4 KSFW	25	19	36	R 1/4
3/8 KSFW	32.5	23	45	R 3/8
1/2 KSFW	35	29	50	R 1/2
3/4 KSFW	40	32	60	R 3/4
1 KSFW	47	41	68	R 1

● KSFW····H type



No.	Part name
①	Nozzle body
②	Core
③	Adapter

Model	Dimension(mm)			Connecting threads
	A	B	L	
1/8 KSFW····H	18	14	26	Rc 1/8
1/4 KSFW····H	25	19	36	Rc 1/4
3/8 KSFW····H	32.5	23	45	Rc 3/8
1/2 KSFW····H	35	29	50	Rc 1/2
3/4 KSFW····H	40	32	60	Rc 3/4
1 KSFW····H	47	41	68	Rc 1

NPT thread is also available.