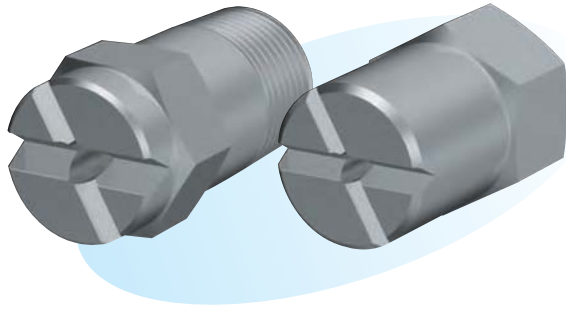


# Rectangular Spray Nozzles



## Features

- No clearance produced in multiple nozzle arrangement.
- Uniform flow distribution.
- Wide-area spraying.

## Applications

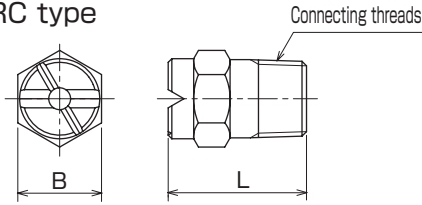
- Washing of gases, incineration smoke, machines, eliminators, screens, parts, ballast, soil, etc.
- Cooling of gases, machines, tanks, steel sheets, etc.
- Waste water treatment, defoaming, fire prevention, dust deposition, etc.

## Materials

- Stainless steel (standard material: SUS303) or brass

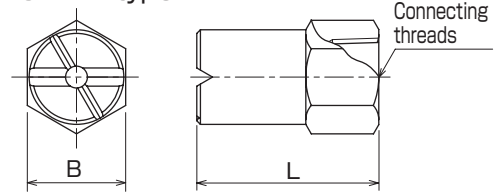
### Shapes and dimensions

#### ● KSRC type



Model	Dimension (mm)		Connecting threads	Weight (g)
	B	L		
3/8 KSRC	17	32	R 3/8	40
1/2 KSRC	22	38	R 1/2	80

#### ● KSRC...H type



Model	Dimension (mm)		Connecting threads	Weight (g)
	B	L		
3/8 KSRC...H	22	38	Rc 3/8	105
1/2 KSRC...H	27	50	Rc 1/2	155

● Model and Model Number representing  $\frac{1}{2}$  K S R C  $\frac{2090$

Connecting threads      Material      Model number

S - stainless steel  
B - brass

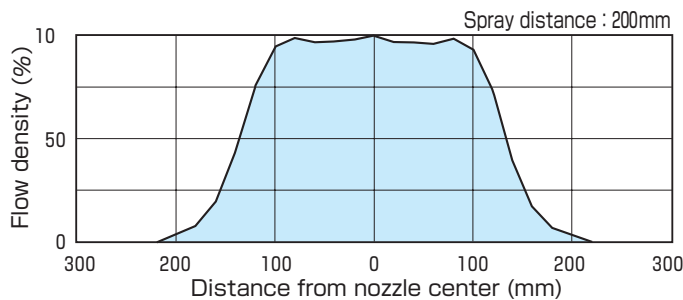
## Standard type model number list

● : Model availability

Connecting threads	Model		Model number	Minimum orifice diameter (mm)	Flow rate (L/min) at following pressure (MPa)							Spray angle at following pressure (MPa)
	R threads KSRC ...	Rc threads KSRC ...H			0.05	0.1	0.2	0.3	0.5	0.7	1.0	
3/8	●	●	1090	1.9	4.9	6.2	8.4	10.0	12.5	14.4	16.8	90°×45°
	●	●	1590	2.2	6.9	9.4	12.6	15.0	18.7	21.6	25.2	90°×45°
1/2	●	●	2090	2.5	9.3	12.5	16.8	20.0	24.9	28.8	33.6	90°×45°
	●	●	2590	2.8	11.6	15.6	21.0	25.0	31.1	36.0	42.0	90°×45°

## Performance data

Flow distribution along long sides



Flow distribution along short sides

