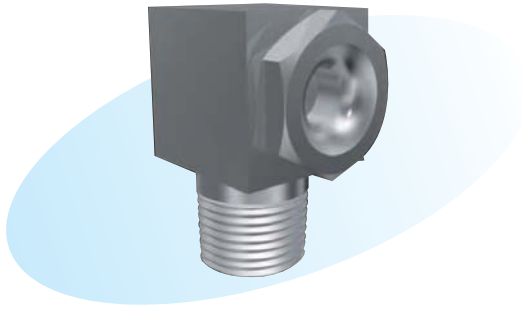


Noncore Full-cone Nozzles



► Features

- High flow rate from a small body.
- Clog-free with no parts inside nozzles.

► Applications

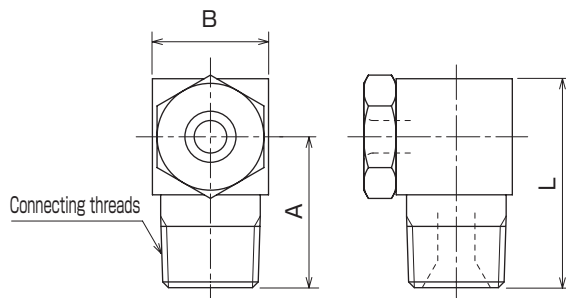
- Cooling of steel sheets, gases, etc.
- Aeration and defoaming.
- For a liquid prone to clogging.

► Materials

- Stainless steel (standard material: SUS303) or brass

Shapes and dimensions

● KSFL type



NPT thread is also available.

Model	Dimension (mm)			Connecting threads	Weight (g)
	A	B	L		
1/4 KSFL	22	16	30	R 1/4	27
3/8 KSFL	27	22	38	R 3/8	48
1/2 KSFL	32.5	25	45	R 1/2	94
3/4 KSFL	42.5	35	60	R 3/4	165
1 KSFL	47.5	45	70	R 1	295
1 1/2 KSFL	60	60	90	R 1 1/2	700

● Model and Model Number representing

1/4	K	S	F	L	10
Connecting threads	Material				Model number
	S - stainless steel				
	B - brass				

● Standard type model number list

Connec- ting threads	Model	Model number	Minimum orifice diameter (mm)	Flow rate (L/min) at following pressure (MPa)						Spray angle at following pressure (MPa)
				0.05	0.1	0.2	0.3	0.4	0.5	0.05~0.5
1/4	KSFL	03	1.8	1.2	1.7	2.4	3.0	3.5	3.9	75°~80°
		04	2.1	1.6	2.3	3.3	4.0	4.6	5.2	
		05	2.3	2.0	2.9	4.1	5.0	5.8	6.5	
		06	2.6	2.4	3.5	4.9	6.0	6.9	7.7	
		07	2.8	2.9	4.0	5.7	7.0	8.1	9.0	
		08	3.3	3.3	4.6	6.5	8.0	9.2	10.3	
		09	3.3	3.7	5.2	7.3	9.0	10.4	11.6	
		10	3.5	4.1	5.8	8.2	10.0	11.5	12.9	
3/8	KSFL	14	4.1	5.7	8.1	11.4	14.0	16.2	18.1	75°~80°
		16	4.3	6.5	9.2	13.1	16.0	18.5	20.7	
		18	4.5	7.3	10.4	14.7	18.0	20.8	23.2	
		20	4.7	8.2	11.5	16.3	20.0	23.1	25.8	
		22	5.0	9.0	12.7	18.0	22.0	25.4	28.4	
		24	5.2	9.8	13.9	19.6	24.0	27.7	31.0	
1/2	KSFL	26	5.8	10.6	15.0	21.2	26.0	30.0	33.6	75°~80°
		28	5.6	11.4	16.2	22.9	28.0	32.3	36.1	
		30	5.9	12.2	17.3	24.5	30.0	34.6	38.7	
		32	5.9	13.1	18.5	26.1	32.0	37.0	41.3	
		35	6.4	14.3	20.2	28.6	35.0	40.4	45.2	
		37	6.7	15.1	21.4	30.2	37.0	42.7	47.8	
3/4	KSFL	40	6.7	16.3	23.1	32.7	40.0	46.2	51.6	75°~80°
		42	7.2	17.1	24.2	34.3	42.0	48.5	54.2	
		45	7.1	18.4	26.0	36.7	45.0	52.0	58.1	
		47	7.3	19.2	27.1	38.4	47.0	54.3	60.7	
		50	7.5	20.4	28.9	40.8	50.0	57.7	64.5	
		55	7.9	22.5	31.8	44.9	55.0	63.5	71.0	
		60	8.2	24.5	34.6	49.0	60.0	69.3	77.5	
		65	8.8	26.5	37.5	53.1	65.0	75.1	83.9	
1	KSFL	70	8.9	28.6	40.4	57.2	70.0	80.8	90.4	75°~80°
		75	9.2	30.6	43.3	61.2	75.0	86.6	96.8	
		80	9.5	32.7	46.2	65.3	80.0	92.4	103	
		85	9.7	34.7	49.1	69.4	85.0	98.1	110	
		90	10.0	36.7	52.0	73.5	90.0	104	116	
		95	10.3	38.8	54.8	77.6	95.0	110	123	
1 1/2	KSFL	100	10.5	40.8	57.7	81.6	100	115	129	75°~80°
		120	11.6	49.0	69.3	98.0	120	139	155	
		140	12.5	57.2	80.8	114	140	162	181	
		160	14.0	65.3	92.4	131	160	185	207	
1 1/2	KSFL	180	14.2	73.5	104	147	180	208	232	75°~80°
		200	15.0	81.6	115	163	200	231	258	
		220	15.7	89.8	127	180	220	254	284	
		250	16.7	102	144	204	250	289	323	
		270	17.4	110	156	220	270	312	349	
		300	19.0	122	173	245	300	346	387	

Note: Flow rates are calculated on the basis of the flow rate at 0.3 MPa pressure.