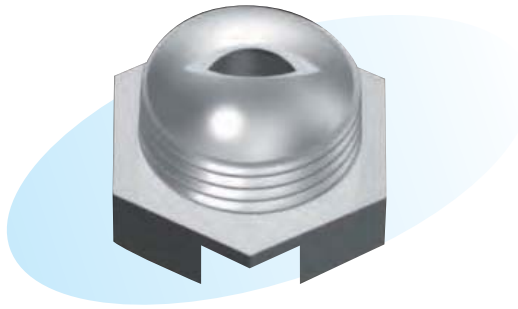


# Flat Spray Nozzles Type C



### ► Features

- When a nozzle of this type is mounted on a pipe, its orifice projects inside the pipe to prevent foreign matter from staying on the orifice.
- Resistant to clogging and easy to clean.

### ► Applications

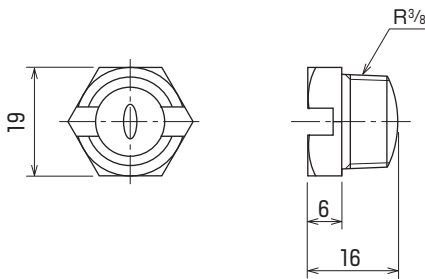
- Washing of felts, wires, filter cloth of water treatment machines, etc.
- Various other washing purposes at locations where water of poor quality must be used.

### ► Material

- Stainless steel (standard material: SUS303) or brass

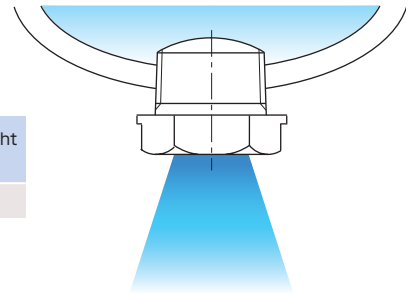
## Shapes and dimensions

### ● KSH...C type

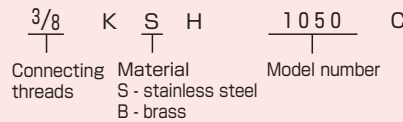


NPT thread is also available.

Model	Weight (g)
3/8 KSH...C	20



### ● Model and Model Number representing



### ● Standard type model number list

Connec- ting threads	Model	Model number	Minimum orifice diameter (mm)	Flow rate (L/min) at following pressure (MPa)								Spray angle at following pressure (MPa)					
				0.05	0.1	0.2	0.3	0.5	0.7	1.0	1.5	0.1	0.2	0.3	0.5	1.0	1.5
3/8	KSH	0550	1.1	2.0	2.9	4.1	5.0	6.5	7.6	9.1	11.2	35°	44°	50°	57°	62°	63°
		0650	1.2	2.4	3.5	4.9	6.0	7.7	9.2	11.0	13.4	35°	44°	50°	57°	62°	63°
		0750	1.4	2.9	4.0	5.7	7.0	9.0	10.7	12.8	15.7	35°	44°	50°	57°	62°	63°
		0850	1.5	3.3	4.6	6.5	8.0	10.3	12.2	14.6	17.9	35°	44°	50°	57°	62°	63°
		1050	1.7	4.1	5.8	8.2	10.0	12.9	15.3	18.3	22.4	35°	44°	50°	57°	62°	63°