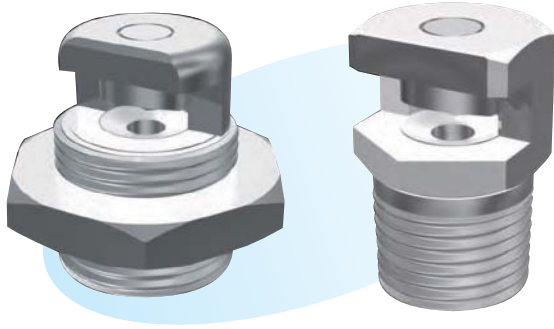


# Self-cleaning Nozzles



## ► Features

- Should the nozzle orifice become blocked with foreign matter, the orifice can be opened wider by reducing the spray pressure to 0.03 MPa, thereby removing any clogging without detaching the nozzle.

## ► Applications

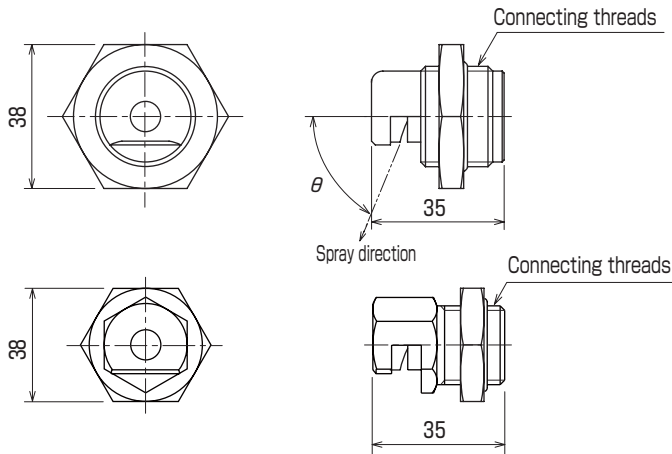
- Cleaning of wire and felt.
- Cleaning of wire roll and press roll.
- Cleaning by the equipment which is difficult to de-installation.

## ► Material

- Stainless steel (SUS303 or SUS316)

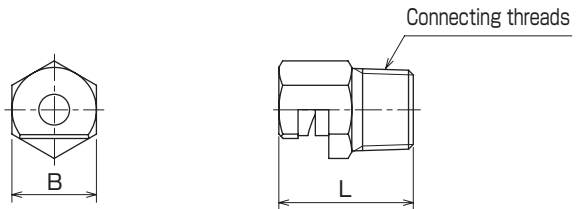
### Shapes and dimensions

#### ● SCF type, straight threaded



Model	Connecting threads	Weight (g)
SCF	G <sup>3</sup> / <sub>4</sub> φ28,20 threads	130

#### ● SCF type, taper threaded



Model	Connecting threads	Weight (g)
SCF	G <sup>1</sup> / <sub>2</sub>	95

Model	Dimension (mm)		Connecting threads	Weight (g)
	B	L		
1/2 SCF	22	35	R 1/2	75
3/4 SCF	27	35	R 3/4	120

NPT thread is also available.

※The spray inclination  $\theta$  ranges from 70 to 85 degrees.

#### ● Model and Model Number representing

##### ● Straight threaded type

S C F    1 0 8 0    G<sup>3</sup>/<sub>4</sub>

Model number    Connecting threads  
G - parallel pipe threads  
No symbol - φ28, 20 threads

##### ● Taper threaded type

1/2    S C F    1 0 8 0

Connecting threads    Model number

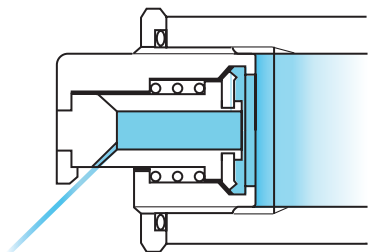
## ● Standard type model number list

Model	Model number	Equivalent orifice diameter (mm)	Flow rate (L/min) at following pressure (MPa)							Spray angle at 0.3 MPa
			0.1	0.2	0.3	0.4	0.5	0.7	1.0	
SCF	0215	1.3	1.15	1.63	2.0	2.3	2.6	3.1	3.7	15°
	0240	1.3	1.15	1.63	2.0	2.3	2.6	3.1	3.7	40°
	0280	1.3	1.15	1.63	2.0	2.3	2.6	3.1	3.7	80°
	02130	1.3	1.15	1.63	2.0	2.3	2.6	3.1	3.7	130°
	0415	1.9	2.3	3.3	4.0	4.6	5.2	6.1	7.3	15°
	0440	1.9	2.3	3.3	4.0	4.6	5.2	6.1	7.3	40°
	0480	1.9	2.3	3.3	4.0	4.6	5.2	6.1	7.3	80°
	04130	1.9	2.3	3.3	4.0	4.6	5.2	6.1	7.3	130°
	0615	2.3	3.5	4.9	6.0	6.9	7.7	9.2	11.0	15°
	0640	2.3	3.5	4.9	6.0	6.9	7.7	9.2	11.0	40°
	0680	2.3	3.5	4.9	6.0	6.9	7.7	9.2	11.0	80°
	06130	2.3	3.5	4.9	6.0	6.9	7.7	9.2	11.0	130°
	1015	3.0	5.8	8.2	10.0	11.5	12.9	15.3	18.3	15°
	1040	3.0	5.8	8.2	10.0	11.5	12.9	15.3	18.3	40°
	1080	3.0	5.8	8.2	10.0	11.5	12.9	15.3	18.3	80°
	10130	3.0	5.8	8.2	10.0	11.5	12.9	15.3	18.3	130°
	1415	3.5	8.1	11.4	14.0	16.2	18.1	21.4	25.6	15°
	1440	3.5	8.1	11.4	14.0	16.2	18.1	21.4	25.6	40°
	1480	3.5	8.1	11.4	14.0	16.2	18.1	21.4	25.6	80°
	14130	3.5	8.1	11.4	14.0	16.2	18.1	21.4	25.6	130°
1815	4.0	10.4	14.7	18.0	20.8	23.2	27.5	32.9	15°	
1840	4.0	10.4	14.7	18.0	20.8	23.2	27.5	32.9	40°	
1880	4.0	10.4	14.7	18.0	20.8	23.2	27.5	32.9	80°	
18130	4.0	10.4	14.7	18.0	20.8	23.2	27.5	32.9	130°	

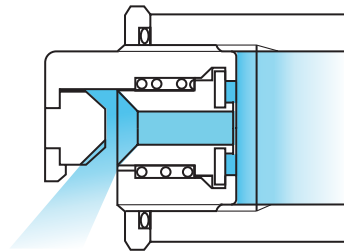
Note: Nozzles with connecting threads of 1/2 size are available for flow rates up to 6L/min at pressure of 0.3MPa. For higher flow rates, nozzles with 3/4 size should be used.

## ● Cleaning principle

In normal operation (at increased pressure)



When cleaning foreign matter (at 0.03 MPa)



Flow rate should not exceed 10L/min for purging foreign substances.