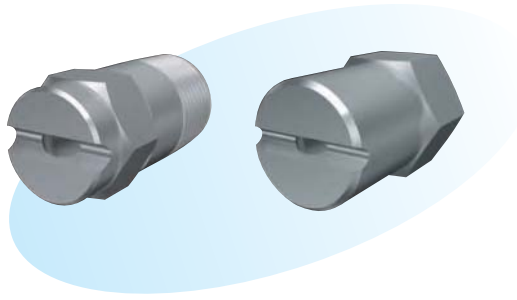


Thickening Flat Spray Nozzles



Features

- Resistance to clogging.
- Wider in spray angle than that of flat spray nozzles (16° to 20° across the spray thickness).

Applications

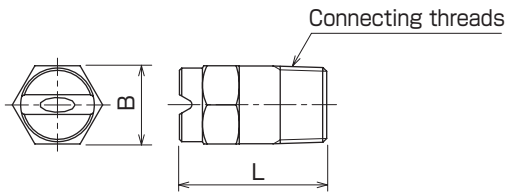
- Cooling of rolls, steel sheets, steel billets, etc.
- Various washing purposes.
- Spraying of chemicals.
- Dust prevention, defoaming, etc.

Materials

- Stainless steel (standard material: SUS303) or brass

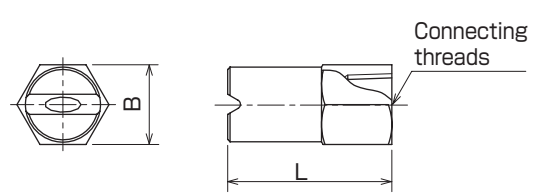
Shapes and dimensions

● KSHR type



Model	Dimension (mm)		Connecting threads	Weight (g)
	B	L		
1/4 KSHR	14	25	R 1/4	25
3/8 KSHR	17	32	R 3/8	45
1/2 KSHR	23	38	R 1/2	95
3/4 KSHR	27	50	R 3/4	175
1 KSHR	35	60	R 1	340

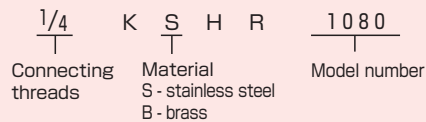
● KSHR...H type



Model	Dimension (mm)		Connecting threads	Weight (g)
	B	L		
1/4 KSHR...H	19	38	Rc 1/4	60
3/8 KSHR...H	21	45	Rc 3/8	85
1/2 KSHR...H	26	50	Rc 1/2	150
3/4 KSHR...H	32	64	Rc 3/4	290

NPT thread is also available.

● Model and Model Number representing



● Standard type model number list

●: Model availability

Connecting threads	Model		Model number	Minimum orifice diameter (mm)	Flow rate (L/min) at following pressure (MPa)						Spray angle at following pressure (MPa)					
	R threads	Rc threads			0.1	0.2	0.3	0.5	0.7	1.0	1.5	0.1	0.2	0.3	0.5	1.0
	KSHR	KSHR-H														
1/4	●	●	0265	0.8	1.15	1.63	2.0	2.6	3.1	3.7	4.5	52°	61°	65°	70°	72°
	●	●	0280	0.7	1.15	1.63	2.0	2.6	3.1	3.7	4.5	62°	72°	80°	87°	91°
	●	●	0365	1.2	1.73	2.5	3.0	3.9	4.6	5.5	6.7	52°	61°	65°	70°	72°
	●	●	0380	1.0	1.73	2.5	3.0	3.9	4.6	5.5	6.7	62°	72°	80°	87°	91°
	●	●	0465	1.5	2.3	3.3	4.0	5.2	6.1	7.3	8.9	54°	62°	65°	70°	72°
	●	●	0480	1.2	2.3	3.3	4.0	5.2	6.1	7.3	8.9	64°	73°	80°	87°	91°
	●	●	0665	1.9	3.5	4.9	6.0	7.8	9.2	11.0	13.4	54°	62°	65°	70°	72°
	●	●	0680	1.6	3.5	4.9	6.0	7.8	9.2	11.0	13.4	67°	77°	80°	83°	86°
	●	●	0865	2.1	4.6	6.5	8.0	10.3	12.2	14.6	17.9	56°	63°	65°	68°	70°
3/8	●	●	1065	2.6	5.8	8.2	10.0	12.9	15.3	18.3	22.4	56°	63°	65°	68°	70°
	●	●	1080	1.9	5.8	8.2	10.0	12.9	15.3	18.3	22.4	70°	78°	80°	83°	84°
	●	●	1565	3.0	8.7	12.2	15.0	19.4	22.9	27.4	33.5	57°	63°	65°	68°	70°
	●	●	1580	2.7	8.7	12.2	15.0	19.4	22.9	27.4	33.5	71°	78°	80°	83°	84°
	●	●	2065	3.6	11.5	16.3	20.0	25.8	30.6	36.5	44.7	57°	63°	65°	68°	70°
	●	●	2080	3.3	11.5	16.3	20.0	25.8	30.6	36.5	44.7	73°	78°	80°	82°	83°
	●	●	2565	4.0	14.4	20.4	25.0	32.3	38.2	45.6	55.9	57°	63°	65°	68°	70°
	●	●	2580	3.5	14.4	20.4	25.0	32.3	38.2	45.6	55.9	73°	78°	80°	81°	82°
1/2	●	●	3065	4.4	17.3	24.5	30.0	38.7	45.8	54.8	67.1	57°	63°	65°	68°	70°
	●	●	3080	3.8	17.3	24.5	30.0	38.7	45.8	54.8	67.1	73°	78°	80°	81°	82°
	●	●	4065	5.0	23.1	32.7	40.0	51.6	61.1	73.0	89.4	57°	63°	65°	68°	70°
	●	●	4080	4.7	23.1	32.7	40.0	51.6	61.1	73.0	89.4	75°	78°	80°	81°	81°
3/4	●	●	5065	5.8	28.9	40.8	50.0	64.5	76.4	91.3	112	57°	63°	65°	68°	70°
	●	●	5080	5.2	28.9	40.8	50.0	64.5	76.4	91.3	112	75°	78°	80°	81°	81°
	●	●	6065	6.5	34.6	49.0	60.0	77.5	91.7	110	134	57°	63°	65°	68°	70°
	●	●	6080	5.8	34.6	49.0	60.0	77.5	91.7	110	134	75°	78°	80°	81°	81°
1	●	●	7565	7.0	43.3	61.2	75.0	96.8	115	137	168	57°	63°	65°	68°	70°
	●	●	7580	6.3	43.3	61.2	75.0	96.8	115	137	168	75°	78°	80°	81°	81°

Note: Nozzles of spray angle up to 110° at a pressure of 0.3 MPa are also available.

● Performance data

