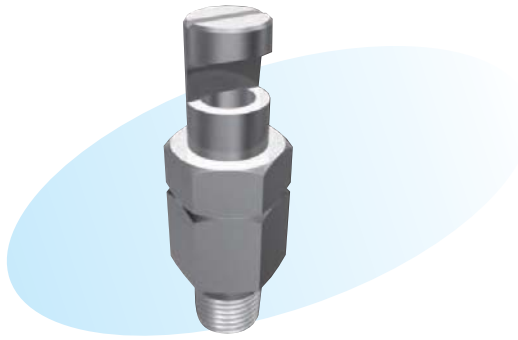


U-Side Spray Nozzles



► Features

- Wide and uniform flow distribution.
- Resistance to clogging.
- Stable sprays due to an adapter equipped with a straightener.

► Applications

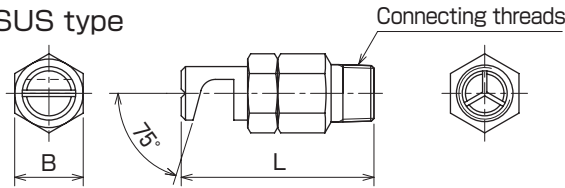
- Washing of conveyors, films, eliminator plates, sheet glass, plate materials, etc.
- Cooling of conveyors, roofs, tanks, etc.
- Defoaming, fire prevention, heat shielding, deodorization, and dust prevention.

► Materials

- Stainless steel (standard material: SUS303) or brass

Shapes and dimensions

● KSUS type



NPT thread is also available.

Model	Dimension (mm)		Connecting threads	Weight (g)
	B	L		
1/4 KSUS	19	60	R 1/4	80
3/8 KSUS	23	70	R 3/8	140
1/2 KSUS	26	80	R 1/2	210
3/4 KSUS	32	90	R 3/4	350
1 KSUS	38	110	R 1	600

● Model and Model Number representing $\frac{1}{4}$ K S U S 03130
 Connecting threads Material Model number
 S - stainless steel
 B - brass

● Standard type model number list

● Model availability

Connecting threads	Model R threads KSUS	Model number	Minimum orifice diameter (mm)	Flow rate (L/min) at following pressure (MPa)								Spray angle at 0.3 MPa
				0.1	0.15	0.2	0.3	0.4	0.5	0.7	1.0	
1/4	●	01130	1.0	0.58	0.71	0.82	1.00	1.15	1.29	1.53	1.83	
	●	02130	1.4	1.15	1.41	1.63	2.0	2.3	2.6	3.1	3.7	
	●	03130	1.7	1.73	2.1	2.4	3.0	3.5	3.9	4.6	5.5	
3/8	●	04130	2.0	2.3	2.8	3.3	4.0	4.6	5.2	6.1	7.3	
	●	06130	2.4	3.5	4.2	4.9	6.0	6.9	7.7	9.2	11.0	
	●	08130	2.8	4.6	5.7	6.5	8.0	9.2	10.3	12.2	14.6	
1/2	●	10130	3.2	5.8	7.1	8.2	10.0	11.5	12.9	15.3	18.3	
	●	15130	3.8	8.7	10.6	12.2	15.0	17.3	19.4	22.9	27.4	
	●	20130	4.4	11.5	14.1	16.3	20.0	23.1	25.8	30.6	36.5	
3/4	●	25130	4.9	14.4	17.7	20.4	25.0	28.9	32.3	38.2	45.6	
	●	30130	5.3	17.3	21.2	24.5	30.0	34.6	38.7	45.8	54.8	
	●	40130	6.1	23.1	28.3	32.7	40.0	46.2	51.6	61.1	73.0	
1	●	50130	7.0	28.9	35.4	40.8	50.0	57.7	64.5	76.4	91.3	
	●	60130	7.6	34.6	42.4	49.0	60.0	69.3	77.5	91.7	110	
	●	75130	8.4	43.3	53.0	61.2	75.0	86.6	96.8	115	137	
1	●	100130	9.7	57.7	70.7	81.6	100	116	129	153	183	