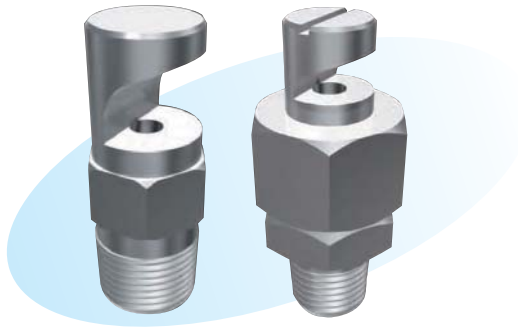


# Side Spray Nozzles



### Features

- Wide spray angle.
- Simple structure for resistance to clogging with impurities.
- Lower in impact than that of flat spray nozzles.
- Interchangeable tips for the separate type.

### Applications

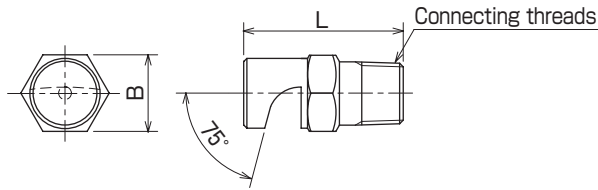
- Washing of conveyors, films, eliminator plates, sheet glass, plate materials, etc.
- Cooling of conveyors, roofs, tanks, etc.
- Fire prevention, heat shielding, deodorization, and dust prevention.

### Materials

- Stainless steel (standard material: SUS303) or brass
- Plastics (PTFE, PVC, or PP)

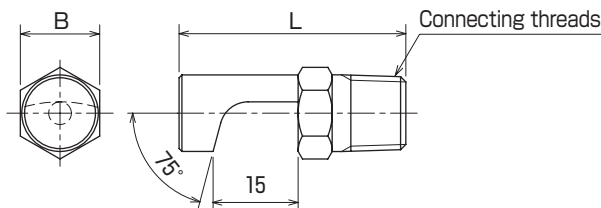
## Shapes and dimensions

#### ● KSY type



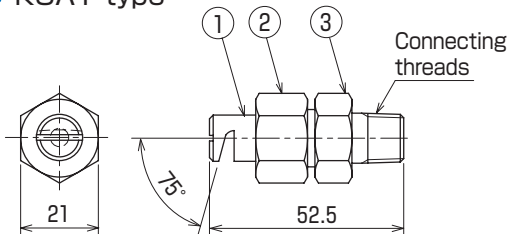
Model	Dimension (mm)		Connecting threads	Weight (g)
	B	L		
1/8 KSY	12	25	R 1/8	20
1/4 KSY	14	34	R 1/4	35
3/8 KSY	17	44	R 3/8	70
1/2 KSY	22	51	R 1/2	130
3/4 KSY	27	60	R 3/4	230

#### ● KSYL type



Model	Dimension (mm)		Connecting threads	Weight (g)
	B	L		
1/8 KSYL	12	40	R 1/8	25
1/4 KSYL	14	40	R 1/4	40
3/8 KSYL	17	44	R 3/8	70
1/2 KSYL	22	51	R 1/2	130
3/4 KSYL	27	60	R 3/4	230

#### ● KSAY type



No.	Part name	Model	Connecting threads	Weight (g)
①	Nozzle tip	1/4 KSAY	R 1/4	90
②	Cap	3/8 KSAY	R 3/8	80
③	Adapter			

NPT thread is also available.

● Model and Model Number representing  $\frac{1}{4}$  K S Y  $\frac{10$

Connecting threads      Material      Model number

S - stainless steel  
B - brass  
P - plastics

## ● Standard type model number list

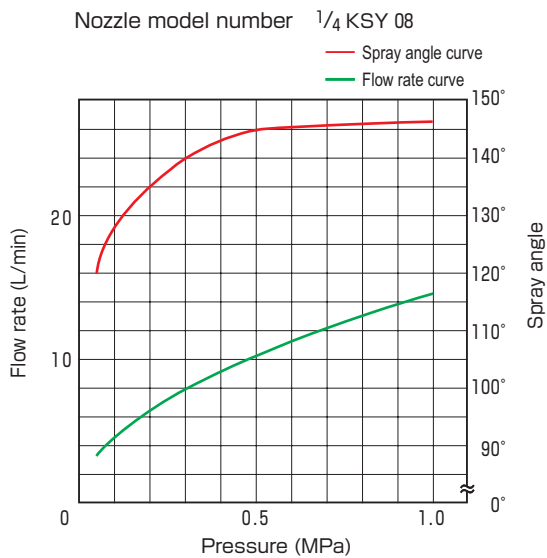
●: Model availability

Connecting threads	Model			Model number	Minimum orifice diameter (mm)	Flow rate (L/min) at following pressure (MPa)						Spray angle at following pressure (MPa)			
	R threads					0.1	0.2	0.3	0.4	0.5	0.7	1.0	0.1	0.3	1.0
	KSY	KSYL	KSAY												
1/8	●	●	●	01	1.1	0.58	0.82	1.00	1.15	1.29	1.53	1.83	127°	140°	148°
	●	●	●	015	1.2	0.87	1.22	1.50	1.73	1.94	2.3	2.7	127°	140°	148°
	●	●	●	02	1.4	1.15	1.63	2.0	2.3	2.6	3.1	3.7	128°	140°	147°
	●	●	●	03	1.7	1.73	2.4	3.0	3.5	3.9	4.6	5.5	128°	140°	147°
1/4	●	●	●	04	2.0	2.3	3.3	4.0	4.6	5.2	6.1	7.3	128°	140°	147°
	●	●	●	06	2.4	3.5	4.9	6.0	6.9	7.7	9.2	11.0	128°	140°	147°
	●	●	●	08	2.9	4.6	6.5	8.0	9.2	10.3	12.2	14.6	128°	140°	147°
	●	●	●	10	3.1	5.8	8.2	10.0	11.5	12.9	15.3	18.3	128°	140°	147°
	●	●	●	15	3.9	8.7	12.2	15.0	17.3	19.4	22.9	27.4	128°	140°	147°
3/8	●	●	●	20	4.4	11.5	16.3	20.0	23.1	25.8	30.6	36.5	130°	140°	146°
	●	●	●	25	4.9	14.4	20.4	25.0	28.9	32.3	38.2	45.6	130°	140°	146°
	●	●	●	30	5.4	17.3	24.5	30.0	34.6	38.7	45.8	54.8	130°	140°	146°
1/2	●	●	●	40	6.2	23.1	32.7	40.0	46.2	51.6	61.1	73.0	132°	140°	145°
	●	●	●	50	7.0	28.9	40.8	50.0	57.7	64.5	76.4	91.3	132°	140°	145°
	●	●	●	60	7.6	34.6	49.0	60.0	69.3	77.5	91.7	110	132°	140°	145°
3/4	●	●	●	75	8.6	43.3	61.2	75.0	86.6	96.8	115	137	133°	140°	144°
	●	●	●	150	12.2	86.6	122	150	173	194	229	274	135°	140°	144°

Note: Connecting threads of KSAY model numbers 01 to 03 are 1/4.

## ● Performance data

### Characteristic curves



### Flow distribution

