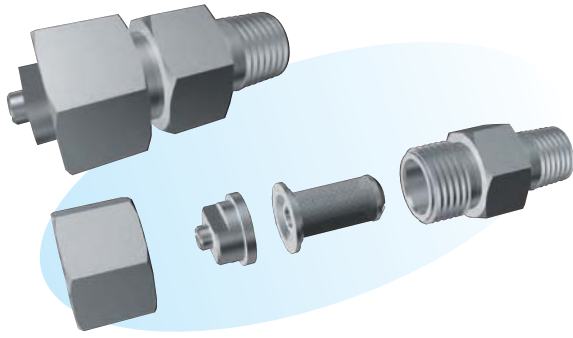


# Flat Spray Atomizing Nozzles



## ► Features

- Minute flow spraying.
- Soft spraying of fine droplets.
- Interchangeable nozzle tips.

## ► Applications

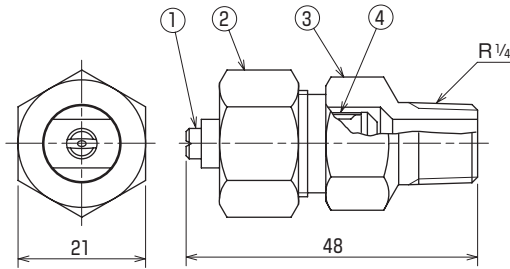
- Application of rolling oil, rust prevention oil, etc.
- Spraying of chemicals and water.

## ► Materials

- Stainless steel (standard material: SUS303) or brass

### Shapes and dimensions

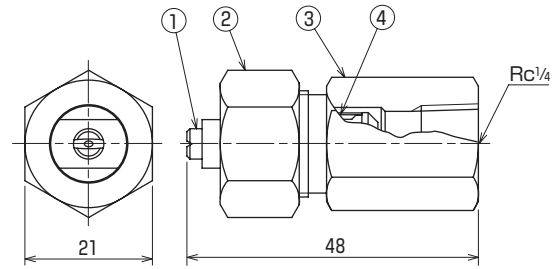
#### ● AS type, external threaded



Weight (g) 60

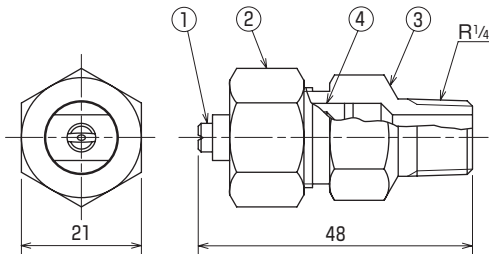
No.	Part name
①	Nozzle tip
②	Cap
③	Adapter
④	Filter

#### ● ASG type, internal threaded



Weight (g) 80

#### ● AS type with check valve



No.	Part name
①	Nozzle tip
②	Cap
③	Adapter
④	Check valve

Weight (g) 65

NPT thread is also available.

#### ● Model and Model Number representing

1/4	A	S	0180
Connecting threads	Material S - stainless steel B - brass		Model number

● Standard type model number list

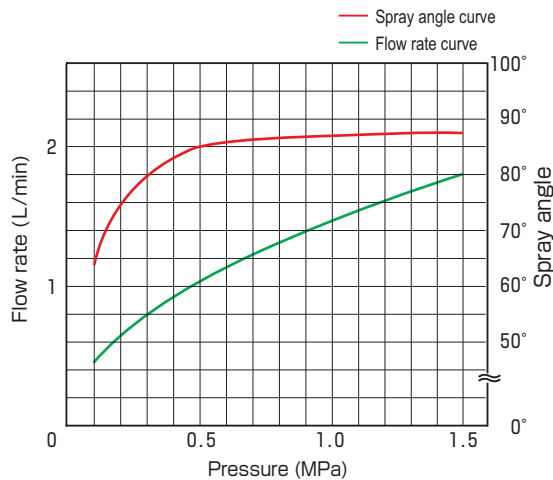
●:Model availability

Connecting threads	Model		Model number	Minimum orifice diameter (mm)	Flow rate (L/min) at following pressure (MPa)						Spray angle at following pressure (MPa)					Filter mesh	
	AS	ASG			0.1	0.2	0.3	0.5	0.7	1.0	1.5	0.1	0.3	0.5	1.0		1.5
1/4	●	●	00240	0.3	0.115	0.163	0.20	0.26	0.31	0.37	0.45	14°	40°	52°	57°	57°	200
	●	●	00250	0.3	0.115	0.163	0.20	0.26	0.31	0.37	0.45	30°	50°	61°	67°	67°	
	●	●	00265	0.25	0.115	0.163	0.20	0.26	0.31	0.37	0.45	43°	65°	75°	82°	82°	
	●	●	00280	0.25	0.115	0.163	0.20	0.26	0.31	0.37	0.45	56°	80°	87°	92°	92°	
	●	●	00340	0.4	0.173	0.24	0.30	0.39	0.46	0.55	0.67	20°	40°	50°	55°	55°	200
	●	●	00350	0.3	0.173	0.24	0.30	0.39	0.46	0.55	0.67	35°	50°	59°	64°	64°	
	●	●	00365	0.3	0.173	0.24	0.30	0.39	0.46	0.55	0.67	45°	65°	74°	80°	80°	
	●	●	00380	0.3	0.173	0.24	0.30	0.39	0.46	0.55	0.67	58°	80°	86°	90°	90°	
	●	●	00440	0.5	0.23	0.33	0.40	0.52	0.61	0.73	0.89	25°	40°	48°	52°	52°	100
	●	●	00450	0.4	0.23	0.33	0.40	0.52	0.61	0.73	0.89	38°	50°	57°	61°	61°	
	●	●	00465	0.4	0.23	0.33	0.40	0.52	0.61	0.73	0.89	47°	65°	73°	78°	78°	
	●	●	00480	0.4	0.23	0.33	0.40	0.52	0.61	0.73	0.89	60°	80°	86°	90°	90°	
	●	●	00640	0.6	0.35	0.49	0.60	0.77	0.92	1.10	1.34	30°	40°	44°	46°	46°	100
	●	●	00650	0.6	0.35	0.49	0.60	0.77	0.92	1.10	1.34	39°	50°	56°	59°	59°	
	●	●	00665	0.5	0.35	0.49	0.60	0.77	0.92	1.10	1.34	49°	65°	72°	76°	76°	
	●	●	00680	0.5	0.35	0.49	0.60	0.77	0.92	1.10	1.34	62°	80°	86°	90°	90°	
	●	●	00840	0.7	0.46	0.65	0.80	1.03	1.22	1.46	1.79	31°	40°	44°	46°	46°	50
	●	●	00850	0.7	0.46	0.65	0.80	1.03	1.22	1.46	1.79	39°	50°	56°	59°	59°	
	●	●	00865	0.6	0.46	0.65	0.80	1.03	1.22	1.46	1.79	51°	65°	71°	75°	75°	
	●	●	00880	0.6	0.46	0.65	0.80	1.03	1.22	1.46	1.79	64°	80°	85°	88°	88°	
	●	●	0140	0.8	0.58	0.82	1.00	1.29	1.53	1.83	2.2	31°	40°	44°	46°	46°	50
	●	●	0150	0.8	0.58	0.82	1.00	1.29	1.53	1.83	2.2	40°	50°	55°	58°	58°	
	●	●	0165	0.7	0.58	0.82	1.00	1.29	1.53	1.83	2.2	51°	65°	71°	75°	75°	
	●	●	0180	0.6	0.58	0.82	1.00	1.29	1.53	1.83	2.2	66°	80°	85°	88°	88°	
	●	●	01540	1.0	0.87	1.22	1.50	1.94	2.3	2.7	3.4	31°	40°	44°	46°	46°	50
	●	●	01550	0.9	0.87	1.22	1.50	1.94	2.3	2.7	3.4	41°	50°	54°	56°	56°	
	●	●	01565	0.9	0.87	1.22	1.50	1.94	2.3	2.7	3.4	53°	65°	70°	73°	73°	
	●	●	01580	0.8	0.87	1.22	1.50	1.94	2.3	2.7	3.4	67°	80°	85°	88°	88°	
	●	●	0240	1.1	1.15	1.63	2.0	2.6	3.1	3.7	4.5	32°	40°	43°	45°	45°	50
	●	●	0250	1.1	1.15	1.63	2.0	2.6	3.1	3.7	4.5	42°	50°	53°	55°	55°	
●	●	0265	1.0	1.15	1.63	2.0	2.6	3.1	3.7	4.5	54°	65°	69°	72°	72°		
●	●	0280	0.9	1.15	1.63	2.0	2.6	3.1	3.7	4.5	67°	80°	85°	88°	88°		
●	●	02540	1.3	1.44	2.0	2.5	3.2	3.8	4.6	5.6	32°	40°	43°	45°	45°	50	
●	●	02550	1.1	1.44	2.0	2.5	3.2	3.8	4.6	5.6	42°	50°	53°	55°	55°		
●	●	02565	1.1	1.44	2.0	2.5	3.2	3.8	4.6	5.6	54°	65°	69°	72°	72°		
●	●	02580	1.0	1.44	2.0	2.5	3.2	3.8	4.6	5.6	67°	80°	85°	88°	88°		

● Performance data

Characteristic curves

Nozzle model number 1/4 AS 00880



Flow distribution

Nozzle model number 1/4 AS 00880  
Spray distance 300mm

