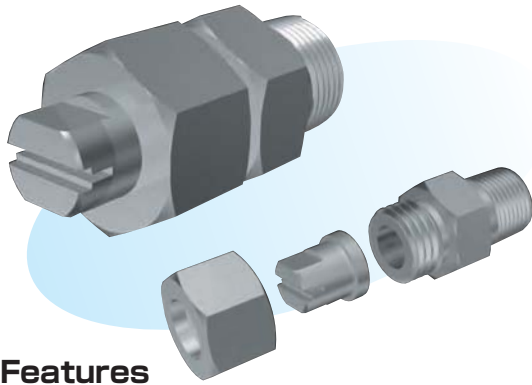


Wide Flat Nozzles



Features

- Interchangeable spray tips.
- With the welded type, the positioning of spray pattern can be done simply by welding an adapter.
- Uniform flow distribution throughout the spray pattern.

Applications

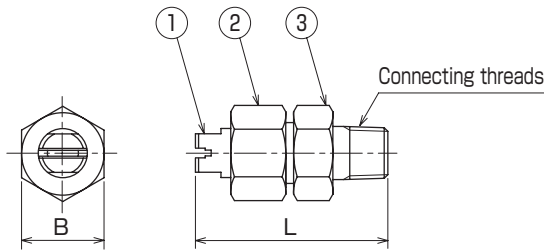
- Washing of vehicles, shipping containers, films, felts, filters, screens, bottles, soil, ballast, metals, machines, steel sheets, steel billets, wires, containers, etc.
- Spraying of etching solution, oil, lubricant, liquid glue, insect repellent, herbicide, aqueous solution, etc.
- Cooling of gases, smokes, heat exchangers, tanks, steel sheets, steel billets, roofs, etc.

Materials

- Stainless steel (standard material: SUS303) or brass

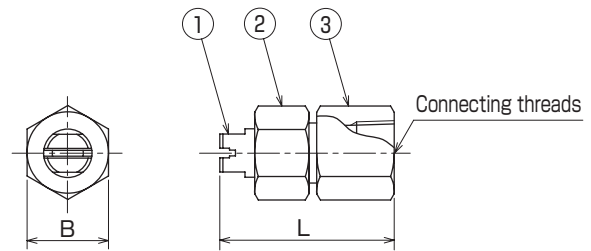
Shapes and dimensions

● KSA...U type, external threaded



Model	Dimension (mm)		Connecting threads	Weight (g)
	B	L		
1/4 KSA...U	21	49	R1/4	70
3/8 KSA...U	21	49	R3/8	70
3/4 KSA...U	35	86	R3/4	320

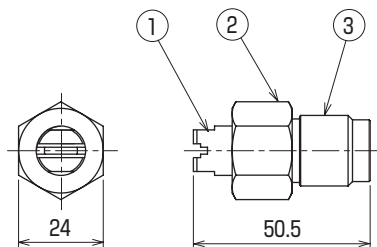
● KSA...U type, internal threaded



No.	Part name
①	Nozzle tip
②	Cap
③	Adapter

Model	Dimension (mm)		Connecting threads	Weight (g)
	B	L		
1/4 KSA...U	21	45	Rc1/4	75
3/8 KSA...U	21	45	Rc3/8	65
3/4 KSA...U	35	70	Rc3/4	360

● KSAM...U type, welded type



No.	Part name
①	Nozzle tip
②	Cap
③	Adapter

Model	Weight (g)
KSAM...U	100

NPT thread is also available.

● Model and Model Number representing $\frac{1}{4}$ K S A 07115 U

Connecting threads Material Model number
 S - stainless steel
 B - brass

● Standard type model number list

●: Model availability

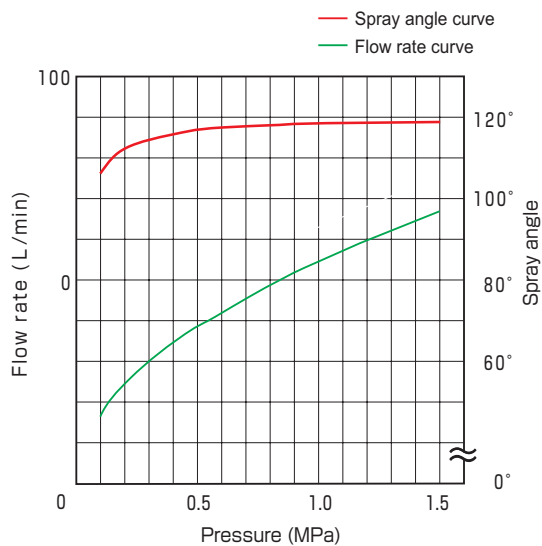
Connecting threads	Model		Model number	Minimum orifice diameter (mm)	Flow rate (L/min) at following pressure (MPa)								Spray angle at following pressure (MPa)											
	R.Fc threads	Welded type			0.05		0.1		0.2		0.3		0.1		0.2		0.3		0.5		1.0		1.5	
	KSA...U	KSAM...U																						
1/4 3/8	●	●	015115	0.35	0.61	0.87	1.22	1.50	1.94	2.3	2.7	3.4	101°	110°	115°	121°	124°	124°						
	●	●	021115	0.4	0.82	1.15	1.63	2.0	2.6	3.1	3.7	4.5	101°	110°	115°	121°	124°	124°						
	●	●	031115	0.55	1.22	1.73	2.4	3.0	3.9	4.6	5.5	6.7	102°	110°	115°	121°	123°	123°						
	●	●	041115	0.6	1.63	2.3	3.3	4.0	5.2	6.1	7.3	8.9	102°	110°	115°	120°	123°	123°						
	●	●	051115	0.75	2.0	2.9	4.1	5.0	6.5	7.6	9.1	11.2	103°	110°	115°	120°	122°	122°						
	●	●	071115	0.9	2.9	4.0	5.7	7.0	9.0	10.7	12.8	15.7	104°	111°	115°	118°	121°	121°						
	●	●	101115	1.0	4.1	5.8	8.2	10.0	12.9	15.3	18.3	22.4	105°	112°	115°	118°	121°	121°						
	●	●	151115	1.3	6.1	8.7	12.2	15.0	19.4	22.9	27.4	33.5	105°	112°	115°	118°	120°	120°						
3/4	●		20115	1.6	8.2	11.5	16.3	20.0	25.8	30.6	36.5	44.7	106°	113°	115°	118°	120°	120°						
	●		30115	1.8	12.2	17.3	24.5	30.0	38.7	45.8	54.8	67.1	107°	113°	115°	117°	119°	119°						
	●		40115	2.1	16.3	23.1	32.7	40.0	51.6	61.1	73.0	89.4	107°	113°	115°	117°	119°	119°						
	●		60115	2.8	24.5	34.6	49.0	60.0	77.5	91.7	110	134	107°	113°	115°	117°	119°	119°						

Note: Nozzles of spray angle 80° to 150° at pressure of 0.3 MPa are also available.

● Performance data

Characteristic curves

Nozzle model number 3/4 KBA30115U



Flow distribution

Nozzle model number 3/4 KBA30115U

Spray distance 500mm

